

Product datasheet for **TA330101**

PAX2 Rabbit Polyclonal Antibody

Product data:

Product Type:	Primary Antibodies
Applications:	IHC, WB
Recommended Dilution:	IHC, WB
Reactivity:	Human
Host:	Rabbit
Isotype:	IgG
Clonality:	Polyclonal
Immunogen:	The immunogen for anti-PAX2 antibody: synthetic peptide directed towards the middle region of human PAX2. Synthetic peptide located within the following region: DPVGSYSINGILGIPRSNGEKRRKREDEDVSEGSVPNGDSQSGVDSLRLKHLR
Formulation:	Liquid. Purified antibody supplied in 1x PBS buffer with 0.09% (w/v) sodium azide and 2% sucrose. <i>Note that this product is shipped as lyophilized powder to China customers.</i>
Conjugation:	Unconjugated
Storage:	Store at -20°C as received.
Stability:	Stable for 12 months from date of receipt.
Predicted Protein Size:	45 kDa
Gene Name:	paired box 2
Database Link:	NP_000269 Entrez Gene 5076 Human Q02962



[View online »](#)

Background:

PAX2 encodes paired box gene 2, one of many human homologues of the *Drosophila melanogaster* gene *prd*. The central feature of this transcription factor gene family is the conserved DNA-binding paired box domain. PAX2 is believed to be a target of transcriptional suppression by the tumor suppressor gene WT1. Mutations within PAX2 have been shown to result in optic nerve colobomas and renal hypoplasia. PAX2 encodes paired box gene 2, one of many human homologues of the *Drosophila melanogaster* gene *prd*. The central feature of this transcription factor gene family is the conserved DNA-binding paired box domain. PAX2 is believed to be a target of transcriptional suppression by the tumor suppressor gene WT1. Mutations within PAX2 have been shown to result in optic nerve colobomas and renal hypoplasia. Alternative splicing of this gene results in multiple transcript variants.

Synonyms:

FSGS7; PAPRS

Note:

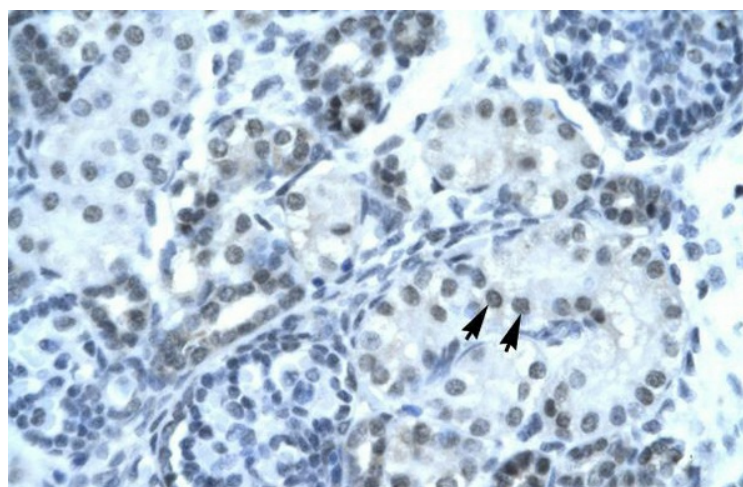
Immunogen sequence homology: Bovine: 100%; Chicken: 100%; Dog: 100%; Guinea pig: 100%; Human: 100%; Pig: 100%; Rabbit: 100%; Sheep: 100%; Zebrafish: 100%; African clawed frog: 92%; Mouse: 92%; Rat: 92%

Protein Families:

Druggable Genome

Product images:

WB Suggested Anti-Antibody Titration: 1.0ug/ml;
Positive Control: MCF-7 whole cell lysates



Rabbit Anti-PAX2 Antibody; Paraffin Embedded Tissue: Human Kidney; Cellular Data: Epithelial cells of renal tubule; Antibody Concentration: 4.0-8.0 ug/ml; Magnification: 400X