

Product datasheet for **TA330096**

IRF8 Rabbit Polyclonal Antibody

Product data:

Product Type:	Primary Antibodies
Applications:	IHC, WB
Recommended Dilution:	WB, IHC
Reactivity:	Human
Host:	Rabbit
Isotype:	IgG
Clonality:	Polyclonal
Immunogen:	The immunogen for anti-IRF8 antibody: synthetic peptide directed towards the N terminal of human IRF8. Synthetic peptide located within the following region: MFRIPWKHAGKQDYNQEVDASIFKAWAVFKGKFKEGDKAEPATWKTRLRC
Formulation:	Liquid. Purified antibody supplied in 1x PBS buffer with 0.09% (w/v) sodium azide and 2% sucrose. <i>Note that this product is shipped as lyophilized powder to China customers.</i>
Conjugation:	Unconjugated
Storage:	Store at -20°C as received.
Stability:	Stable for 12 months from date of receipt.
Predicted Protein Size:	48 kDa
Gene Name:	interferon regulatory factor 8
Database Link:	NP_002154 Entrez Gene 3394 Human Q02556

Background: Interferon regulatory factor 8 (IRF8, interferon consensus sequence-binding protein, Ion ChannelSBP) is a transcription factor of the interferon (IFN) regulatory factor (IRF) family. Proteins of this family are composed of a conserved DNA-binding domain in the N-terminal region and a divergent C-terminal region that serves as the regulatory domain. The IRF family proteins bind to the IFN-stimulated response element (ISRE) and regulate expression of genes stimulated by type I IFNs, namely IFN- α and IFN- β . IRF family proteins also control expression of IFN- α and IFN- β -regulated genes that are induced by viral infection.



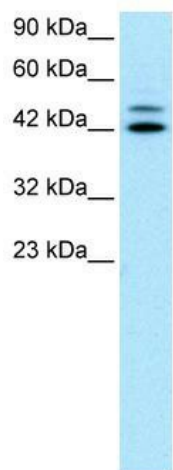
[View online »](#)

Synonyms: H-ICSBP; ICSBP; ICSBP1; IMD32A; IMD32B; IRF-8

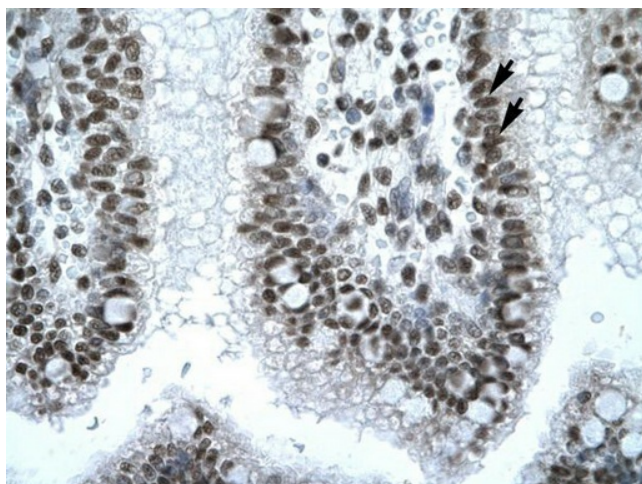
Note: Immunogen sequence homology: African clawed frog: 100%; Bovine: 100%; Chicken: 100%; Dog: 100%; Guinea pig: 100%; Horse: 100%; Human: 100%; Mouse: 100%; Pig: 100%; Rabbit: 100%; Rat: 100%; Zebrafish: 100%

Protein Families: Transcription Factors

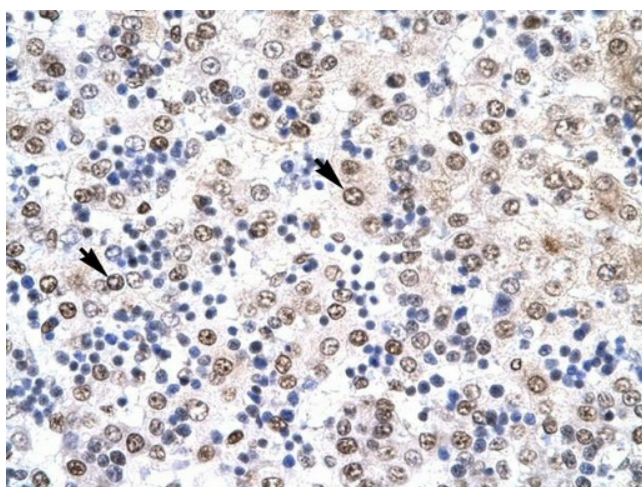
Product images:



WB Suggested Anti-IRF8 Antibody Titration: 0.2-1 ug/ml; ELISA Titer: 1:62500; Positive Control: Jurkat cell lysate



Immunohistochemistry with Human Intestine tissue



Immunohistochemistry with Human Liver cell lysate tissue