

## Product datasheet for **TA330095**

### HLX1 (HLX) Rabbit Polyclonal Antibody

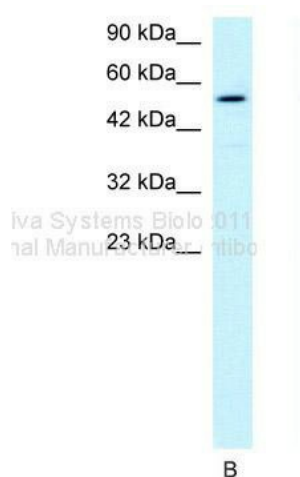
#### Product data:

Product Type:	Primary Antibodies
Applications:	IF, WB
Recommended Dilution:	WB, IF
Reactivity:	Human, Xenopus
Host:	Rabbit
Isotype:	IgG
Clonality:	Polyclonal
Immunogen:	The immunogen for anti-HLX1 antibody: synthetic peptide directed towards the middle region of human HLX1 (Cat# AAP31195). Synthetic peptide located within the following region: PGPYAVLTKDTMPQTYKRKRSWSRAVFSNLQRKGLEKRFEIQKYVTKPDR
Formulation:	Liquid. Purified antibody supplied in 1x PBS buffer with 0.09% (w/v) sodium azide and 2% sucrose. <i>Note that this product is shipped as lyophilized powder to China customers.</i>
Conjugation:	Unconjugated
Storage:	Store at -20°C as received.
Stability:	Stable for 12 months from date of receipt.
Predicted Protein Size:	51 kDa
Gene Name:	H2.0 like homeobox
Database Link:	<a href="#">NP_068777</a> <a href="#">Entrez Gene 3142 Human Q14774</a>
Background:	H2.0-like homeo box 1; H2.0 (Drosophila)-like homeo box-1.
Synonyms:	HB24; HLX1
Note:	Immunogen sequence homology: Zebrafish: 92%
Protein Families:	Transcription Factors

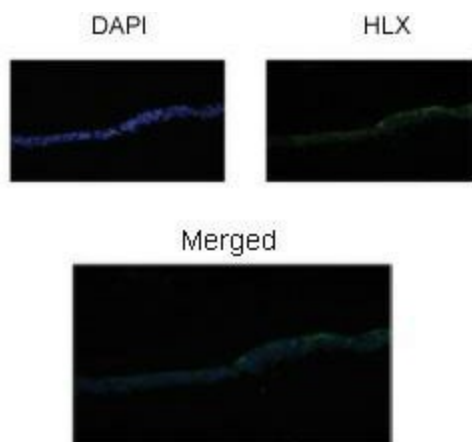


[View online »](#)

Product images:



WB Suggested Anti-HLX1 Antibody Titration:  
1ug/ml; Positive Control: HepG2 cell lysate



Sample Type: Xenopus Laevis embryo stage 46  
gut tissue Primary Dilution: 1:200