

## Product datasheet for **TA330094**

### GCM1 Rabbit Polyclonal Antibody

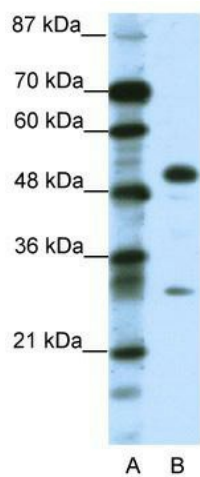
#### Product data:

Product Type:	Primary Antibodies
Applications:	WB
Recommended Dilution:	WB
Reactivity:	Human
Host:	Rabbit
Isotype:	IgG
Clonality:	Polyclonal
Immunogen:	The immunogen for anti-GCM1 antibody: synthetic peptide directed towards the C terminal of human GCM1. Synthetic peptide located within the following region: DFNSYVQSPAYHSPQEDPFLFTYASHPHQQYSLPSKSSKWDFFEEEMTYLG
Formulation:	Liquid. Purified antibody supplied in 1x PBS buffer with 0.09% (w/v) sodium azide and 2% sucrose.
Conjugation:	Unconjugated
Storage:	Store at -20°C as received.
Stability:	Stable for 12 months from date of receipt.
Predicted Protein Size:	49 kDa
Gene Name:	glial cells missing homolog 1
Database Link:	<a href="#">NP_003634</a> <a href="#">Entrez Gene 8521 Human</a> <a href="#">Q9NP62</a>
Background:	GCM1 is a DNA-binding protein with a gcm-motif (glial cell missing motif). GCM1 is a homolog of the Drosophila glial cells missing gene (gcm). This protein binds to the GCM-motif (A/G)CCCGCAT, a novel sequence among known targets of DNA-binding proteins.
Synonyms:	GCMA; hGCMA
Note:	Immunogen sequence homology: Human: 100%; Horse: 92%; Dog: 90%; Rabbit: 81%
Protein Families:	Transcription Factors



[View online »](#)

## Product images:



WB Suggested Anti-GCM1 Antibody Titration: 0.2-1 ug/ml; Positive Control: HepG2 cell lysate