

Product datasheet for **TA330093**

GCM1 Rabbit Polyclonal Antibody

Product data:

Product Type:	Primary Antibodies
Applications:	IHC, WB
Recommended Dilution:	WB, IHC
Reactivity:	Human
Host:	Rabbit
Isotype:	IgG
Clonality:	Polyclonal
Immunogen:	The immunogen for anti-GCM1 antibody: synthetic peptide directed towards the N terminal of human GCM1. Synthetic peptide located within the following region: MEPDDDFSEDKEILSWDINDVKLPQNVKKTDFWFQEWPD SYAKHIYSSEDK
Formulation:	Liquid. Purified antibody supplied in 1x PBS buffer with 0.09% (w/v) sodium azide and 2% sucrose. <i>Note that this product is shipped as lyophilized powder to China customers.</i>
Conjugation:	Unconjugated
Storage:	Store at -20°C as received.
Stability:	Stable for 12 months from date of receipt.
Predicted Protein Size:	49 kDa
Gene Name:	glial cells missing homolog 1
Database Link:	NP_003634 Entrez Gene 8521 Human Q9NP62



[View online »](#)

Background:

GCM1 is a DNA-binding protein with a gcm-motif (glial cell missing motif). The encoded protein is a homolog of the Drosophila glial cells missing gene (gcm). This protein binds to the GCM-motif (A/G)CCCGCAT, a novel sequence among known targets of DNA-binding proteins. The N-terminal DNA-binding domain confers the unique DNA-binding activity of this protein. This gene encodes a DNA-binding protein with a gcm-motif (glial cell missing motif). The encoded protein is a homolog of the Drosophila glial cells missing gene (gcm). This protein binds to the GCM-motif (A/G)CCCGCAT, a novel sequence among known targets of DNA-binding proteins. The N-terminal DNA-binding domain confers the unique DNA-binding activity of this protein. Publication Note: This RefSeq record includes a subset of the publications that are available for this gene. Please see the Entrez Gene record to access additional publications. PRIMARYREFSEQ_SPAN PRIMARY_IDENTIFIER PRIMARY_SPAN COMP 1-132 D88613.1 1-132 133-2763 AB026493.1 1-2631

Synonyms:

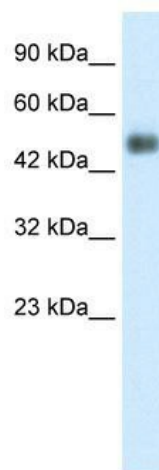
GCMA; hGCMA

Note:

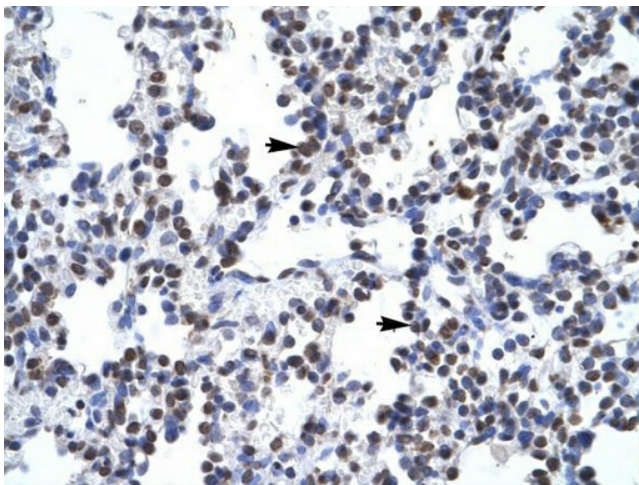
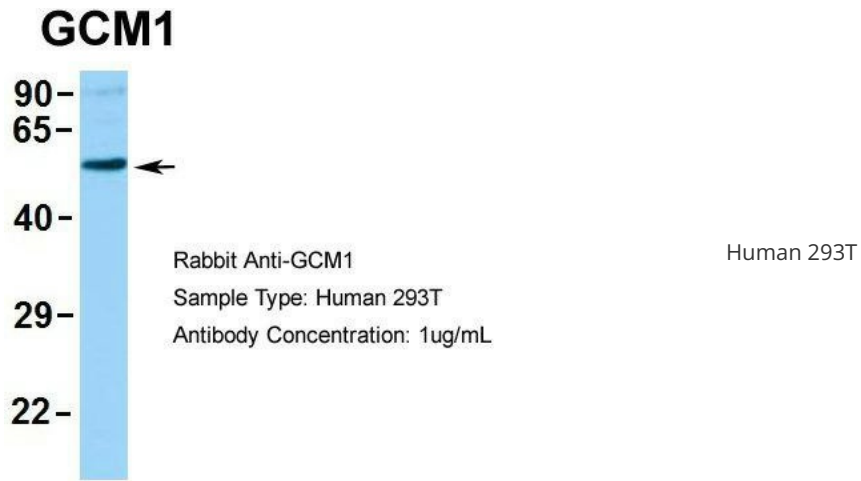
Immunogen sequence homology: Human: 92%; Dog: 78%; Mouse: 78%; Rat: 78%

Protein Families:

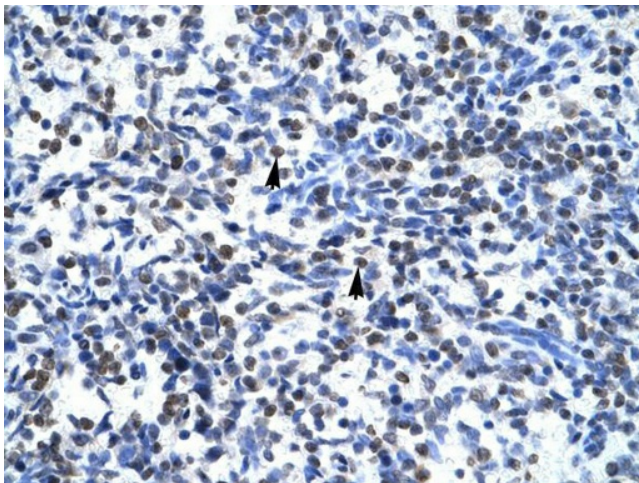
Transcription Factors

Product images:

WB Suggested Anti-GCM1 Antibody Titration: 0.2-1 ug/ml; ELISA Titer: 1:7812500; Positive Control: Human Placenta



Human Lung



Human Spleen