

## Product datasheet for **TA330089**

### FLI1 Rabbit Polyclonal Antibody

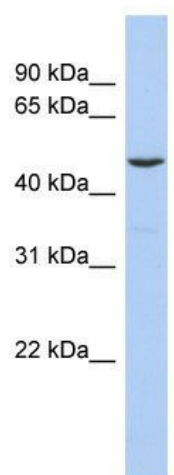
#### Product data:

Product Type:	Primary Antibodies
Applications:	WB
Recommended Dilution:	WB
Reactivity:	Human
Host:	Rabbit
Isotype:	IgG
Clonality:	Polyclonal
Immunogen:	The immunogen for anti-FLI1 antibody: synthetic peptide directed towards the N terminal of human FLI1. Synthetic peptide located within the following region: TASGSPDYGQPHKINLPPQQEWINQPVRVNVKREYDHMNGSRESPVDCS
Formulation:	Liquid. Purified antibody supplied in 1x PBS buffer with 0.09% (w/v) sodium azide and 2% sucrose. <i>Note that this product is shipped as lyophilized powder to China customers.</i>
Conjugation:	Unconjugated
Storage:	Store at -20°C as received.
Stability:	Stable for 12 months from date of receipt.
Predicted Protein Size:	51 kDa
Gene Name:	Fli-1 proto-oncogene, ETS transcription factor
Database Link:	<a href="#">NP_002008</a> <a href="#">Entrez Gene 2313 Human</a> <a href="#">Q01543</a>
Background:	FLI1 is a sequence-specific transcriptional activator. FLI1 recognizes the DNA sequence 5'-C[CA]GGAAGT-3'.
Synonyms:	EWSR2; SIC-1
Note:	Immunogen sequence homology: Bovine: 100%; Chicken: 100%; Dog: 100%; Guinea pig: 100%; Horse: 100%; Human: 100%; Mouse: 100%; Pig: 100%; Rabbit: 100%; Rat: 100%; Zebrafish: 92%; African clawed frog: 85%
Protein Families:	Transcription Factors



[View online »](#)

## Product images:



WB Suggested Anti-FLI1 Antibody Titration: 0.2-1 ug/ml; ELISA Titer: 1:62500; Positive Control: COLO205 cell lysate