

## Product datasheet for **TA330088**

### EVX1 Rabbit Polyclonal Antibody

#### Product data:

Product Type:	Primary Antibodies
Applications:	IHC, WB
Recommended Dilution:	WB, IHC
Reactivity:	Human
Host:	Rabbit
Isotype:	IgG
Clonality:	Polyclonal
Immunogen:	The immunogen for anti-EVX1 antibody: synthetic peptide directed towards the N terminal of human EVX1. Synthetic peptide located within the following region: AGSAAGPGAEPQVAGAAMLGPGPPAPSVDSLQGGQPSSSDTESDFYEEI
Formulation:	Liquid. Purified antibody supplied in 1x PBS buffer with 0.09% (w/v) sodium azide and 2% sucrose.
Conjugation:	Unconjugated
Storage:	Store at -20°C as received.
Stability:	Stable for 12 months from date of receipt.
Predicted Protein Size:	42 kDa
Gene Name:	even-skipped homeobox 1
Database Link:	<a href="#">NP_001980</a> <a href="#">Entrez Gene 2128 Human P49640</a>
Background:	EVX1 is a member of the vertebrate eve-related homeo box family. This protein acts as a transcriptional repressor. A similar protein in mice is critical for early embryogenesis.
Synonyms:	EVX-1
Note:	Immunogen sequence homology: Bovine: 100%; Dog: 100%; Guinea pig: 100%; Human: 100%; Mouse: 100%; Pig: 100%; Rabbit: 100%; Rat: 100%; Chicken: 91%
Protein Families:	ES Cell Differentiation/IPS

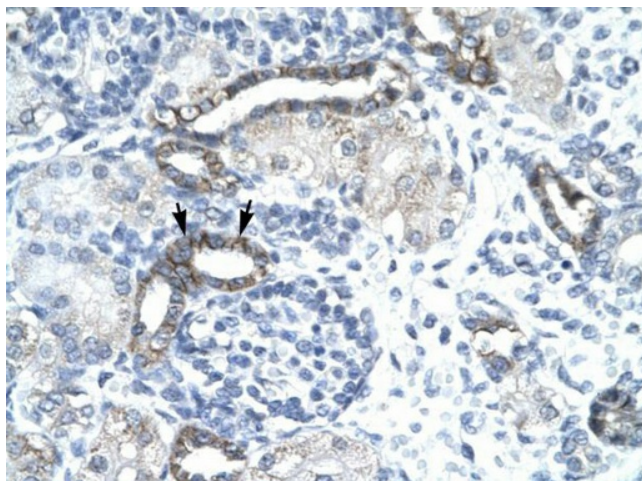


[View online »](#)

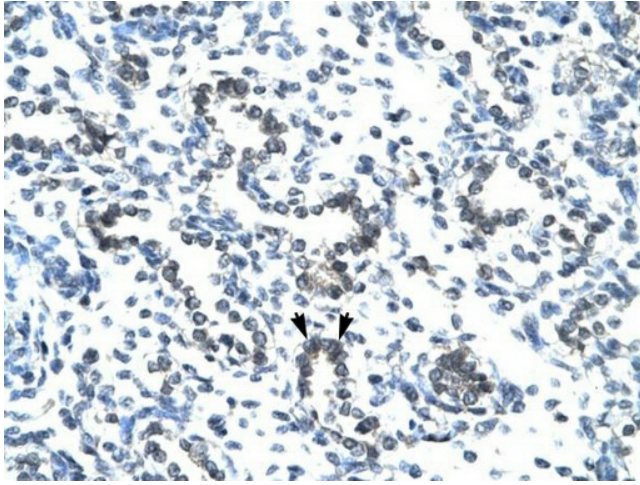
## Product images:



WB Suggested Anti-EVX1 Antibody Titration: 1.0-2.0ug/ml; Positive Control: Jurkat cell lysate



Human kidney



Human Lung