

Product datasheet for **TA330086**

DP1 (TFDP1) Rabbit Polyclonal Antibody

Product data:

Product Type:	Primary Antibodies
Applications:	IF, IHC, WB
Recommended Dilution:	WB, IHC, IF
Reactivity:	Human
Host:	Rabbit
Isotype:	IgG
Clonality:	Polyclonal
Immunogen:	The immunogen for anti-TFDP1 antibody: synthetic peptide directed towards the N terminal of human TFDP1. Synthetic peptide located within the following region: VIGTPQRPAASNTLVGSPHTPSTHFASQNQPSDSSPWSAGKRNRKGEKN
Formulation:	Liquid. Purified antibody supplied in 1x PBS buffer with 0.09% (w/v) sodium azide and 2% sucrose. <i>Note that this product is shipped as lyophilized powder to China customers.</i>
Conjugation:	Unconjugated
Storage:	Store at -20°C as received.
Stability:	Stable for 12 months from date of receipt.
Predicted Protein Size:	45 kDa
Gene Name:	transcription factor Dp-1
Database Link:	NP_009042 Entrez Gene 7027 Human Q14186
Background:	The E2F transcription factor family regulates the expression of various cellular promoters, particularly those involved in the cell cycle. E2F factors bind to DNA as homodimers or heterodimers in association with dimerization partner DP1. TFDP1 may be the first example of a family of related transcription factors and may have a role in progression of some hepatocellular carcinomas by promoting growth of the tumor cells.
Synonyms:	DILC; Dp-1; DP1; DRTF1



[View online »](#)

Note: Immunogen sequence homology: Human: 100%; Bovine: 92%; Mouse: 92%; African clawed frog: 84%; Chicken: 84%

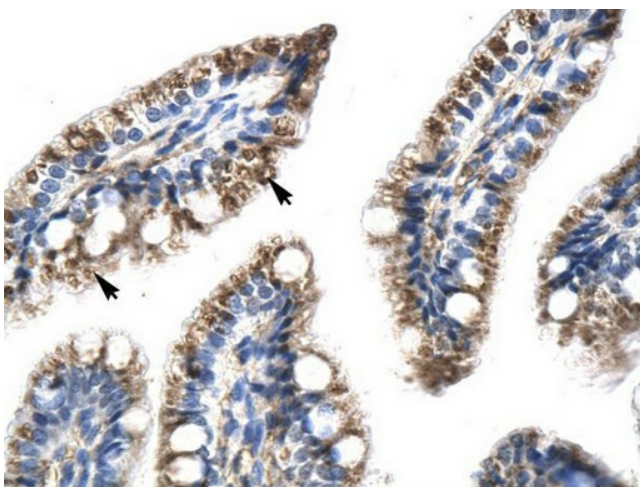
Protein Families: Druggable Genome, Transcription Factors

Protein Pathways: Cell cycle, TGF-beta signaling pathway

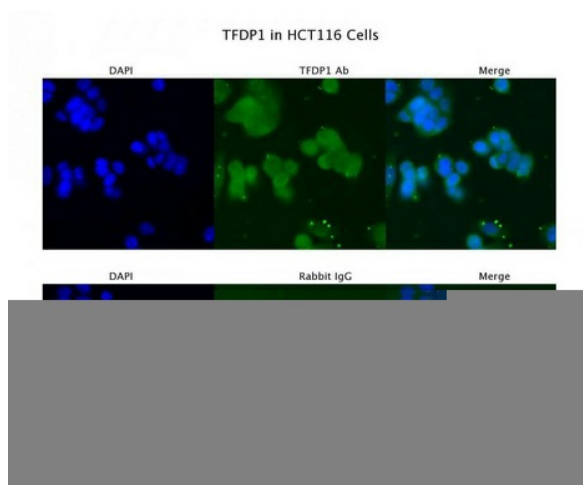
Product images:



WB Suggested Anti-TFDP1 Antibody Titration: 0.2-1 ug/ml; Positive Control: Human Liver



Human Intestine



Sample Type : HCT116; Primary Antibody Dilution: 4 ug/ml; Secondary Antibody : Anti-rabbit Alexa 546; Secondary Antibody Dilution: 2 ug/ml; Gene Name : TFDP1