

## Product datasheet for **TA330085**

### NFIC Rabbit Polyclonal Antibody

#### Product data:

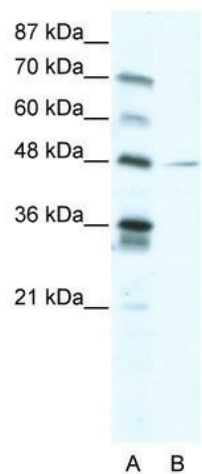
Product Type:	Primary Antibodies
Applications:	WB
Recommended Dilution:	WB
Reactivity:	Human
Host:	Rabbit
Isotype:	IgG
Clonality:	Polyclonal
Immunogen:	The immunogen for anti-NFIC antibody: synthetic peptide directed towards the C terminal of human NFIC. Synthetic peptide located within the following region: VRERDAEQSGSPRTGMGSDQEDSKPITLDTTDFQESFVTSQVFSVTELIQ
Formulation:	Liquid. Purified antibody supplied in 1x PBS buffer with 0.09% (w/v) sodium azide and 2% sucrose. <i>Note that this product is shipped as lyophilized powder to China customers.</i>
Conjugation:	Unconjugated
Storage:	Store at -20°C as received.
Stability:	Stable for 12 months from date of receipt.
Predicted Protein Size:	48 kDa
Gene Name:	nuclear factor I C
Database Link:	<a href="#">NP_005588</a> <a href="#">Entrez Gene 4782 Human P08651</a>
Background:	Brg- or hBrm-associated factor (BAF) complexes, a chromatin-remodeling complex family of mammalian cells, facilitate transcriptional activity by remodeling nucleosome structure. Brg1 is the core subunit of Brg-associated factor complexes. BAF complexes can interact with NF1/CTF and RNAP II, and this interaction is closely dependent on the activation of gene transcription.
Synonyms:	CTF; CTF5; NF-I; NFI
Note:	Immunogen sequence homology: Human: 100%



[View online »](#)

Protein Families: Transcription Factors

**Product images:**



WB Suggested Anti-NFIC Antibody Titration:  
2.5ug/ml; Positive Control: HepG2 cell lysate