

Product datasheet for **TA330083**

NR2F2 Rabbit Polyclonal Antibody

Product data:

Product Type:	Primary Antibodies
Applications:	IHC, WB
Recommended Dilution:	WB, IHC
Reactivity:	Human
Host:	Rabbit
Isotype:	IgG
Clonality:	Polyclonal
Immunogen:	The immunogen for anti-NR2F2 antibody: synthetic peptide directed towards the N terminal of human NR2F2. Synthetic peptide located within the following region: KVGMRREAVQRGRMPPTQPTHGQFALTNGDPLNCHSYLSGYISLLRAEP
Formulation:	Liquid. Purified antibody supplied in 1x PBS buffer with 0.09% (w/v) sodium azide and 2% sucrose. <i>Note that this product is shipped as lyophilized powder to China customers.</i>
Conjugation:	Unconjugated
Storage:	Store at -20°C as received.
Stability:	Stable for 12 months from date of receipt.
Predicted Protein Size:	45 kDa
Gene Name:	nuclear receptor subfamily 2 group F member 2
Database Link:	NP_066285 Entrez Gene 7026 Human P24468
Background:	NR2F2, an orphan member of the nuclear hormone receptor superfamily, acts as a transcriptional repressor by antagonizing the functions of other nuclear hormone receptors and by actively silencing transcription. However, in certain contexts, NR2F2 stimulates transcription directly. NR2F2, MyoD and p300 interact in a competitive manner, and that increasing amounts of NR2F2 have the ability to reduce the interaction between myoD and p300 invitro. NR2F2 post-transcriptionally regulates myoD activity/function, and that crosstalk between orphan nuclear receptors and the myogenic bHLH proteins has functional consequences for differentiation.



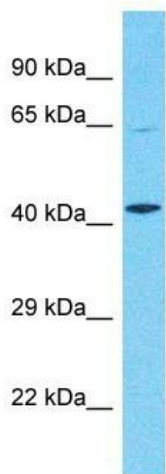
[View online »](#)

Synonyms: ARP1; CHTD4; COUPTFB; COUPTFII; NF-E3; NR2F1; SVP40; TFCOUP2

Note: Immunogen sequence homology: African clawed frog: 100%; Dog: 100%; Human: 100%; Mouse: 100%; Pig: 100%; Rabbit: 100%; Rat: 100%; Bovine: 92%; Chicken: 92%; Sheep: 92%; Zebrafish: 92%

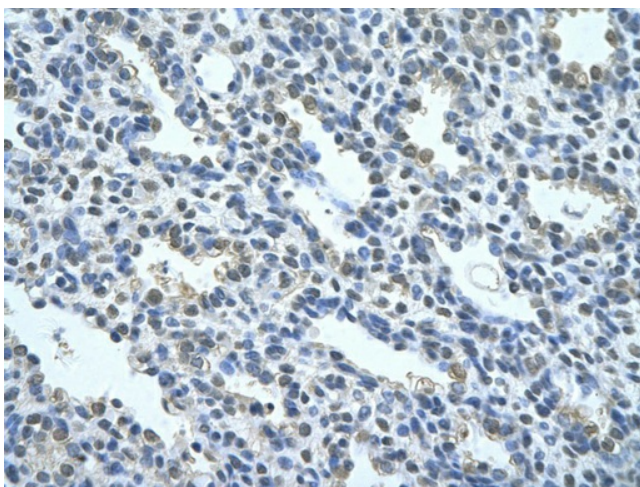
Protein Families: Druggable Genome, Nuclear Hormone Receptor, Transcription Factors

Product images:



Host: Rabbit
 Target Name: NR2F2
 Sample Tissue: MCF7 Cell Lysate
 Antibody Dilution: 1.0µg/ml

Host: Rabbit; Target Name: NR2F2; Sample Tissue: MCF7 Whole Cell lysates; Antibody Dilution: 1.0ug/ml



Rabbit Anti-NR2F2 Antibody; Catalog Number: P100816; Paraffin Embedded Tissue: Human alveolar cell; Cellular Data: Epithelial cells of renal tubule; Antibody Concentration: 4.0-8.0 ug/ml; Magnification: 400X