

Product datasheet for **TA330081**

GTF2H1 Rabbit Polyclonal Antibody

Product data:

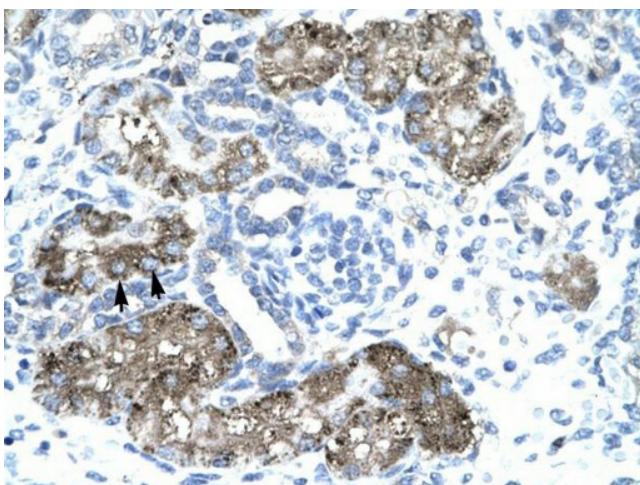
Product Type:	Primary Antibodies
Applications:	IHC, WB
Recommended Dilution:	WB, IHC
Reactivity:	Human, Mouse
Host:	Rabbit
Isotype:	IgG
Clonality:	Polyclonal
Immunogen:	The immunogen for anti-GTF2H1 antibody: synthetic peptide directed towards the N terminal of human GTF2H1. Synthetic peptide located within the following region: EEVLLIVKKVRQKKQDGALYLMAERIAWAPEGKDRFTISHMYADIKCQKI
Formulation:	Liquid. Purified antibody supplied in 1x PBS buffer with 0.09% (w/v) sodium azide and 2% sucrose. <i>Note that this product is shipped as lyophilized powder to China customers.</i>
Conjugation:	Unconjugated
Storage:	Store at -20°C as received.
Stability:	Stable for 12 months from date of receipt.
Predicted Protein Size:	62 kDa
Gene Name:	general transcription factor IIH subunit 1
Database Link:	NP_005307 Entrez Gene 14884 Mouse Entrez Gene 2965 Human P32780
Background:	Transcription Factor IIH, polypeptide 1.
Synonyms:	BTF2; P62; TFB1; TFIIH
Note:	Immunogen sequence homology: African clawed frog: 100%; Chicken: 100%; Guinea pig: 100%; Horse: 100%; Human: 100%; Mouse: 100%; Pig: 100%; Rat: 100%; Zebrafish: 78%
Protein Families:	Druggable Genome, Transcription Factors
Protein Pathways:	Basal transcription factors, Nucleotide excision repair



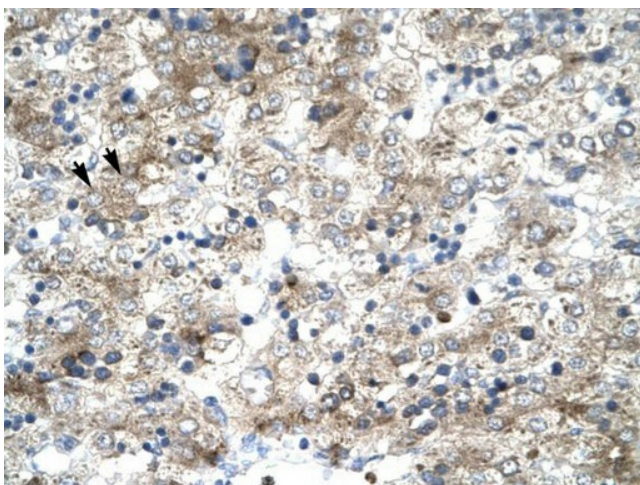
[View online »](#)

Product images:

WB Suggested Anti-GTF2H1 Antibody Titration: 1.0-2.0ug/ml; Positive Control: Daudi cell lysate
GTF2H1 is supported by BioGPS gene expression data to be expressed in Daudi



Human kidney



Human Liver