

## Product datasheet for **TA330078**

### ETV6 Rabbit Polyclonal Antibody

#### Product data:

Product Type:	Primary Antibodies
Applications:	IHC, WB
Recommended Dilution:	WB, IHC
Reactivity:	Human, Mouse
Host:	Rabbit
Isotype:	IgG
Clonality:	Polyclonal
Immunogen:	The immunogen for anti-ETV6 antibody: synthetic peptide directed towards the C terminal of human ETV6. Synthetic peptide located within the following region: VSVSPPEEHAMPIGRIADCRLLDYVYQLLSDSRYENFIRWEDKESKIFR
Formulation:	Liquid. Purified antibody supplied in 1x PBS buffer with 0.09% (w/v) sodium azide and 2% sucrose. <i>Note that this product is shipped as lyophilized powder to China customers.</i>
Conjugation:	Unconjugated
Storage:	Store at -20°C as received.
Stability:	Stable for 12 months from date of receipt.
Predicted Protein Size:	53 kDa
Gene Name:	ETS variant 6
Database Link:	<a href="#">NP_001978</a> <a href="#">Entrez Gene 14011 Mouse</a> <a href="#">Entrez Gene 2120 Human</a> <a href="#">P41212</a>



[View online »](#)

**Background:**

ETV6 (ETS-related protein Tel1, ETS translocation variant 6, Tel) is an ETS family transcription factor. This protein contains two functional domains: a N-terminal pointed (PNT) domain that is involved in the protein-protein interactions with itself and other proteins, and a C-terminal DNA-binding domain. Gene knockout studies in mice suggest that it is required for hematopoiesis and maintenance of the developing vascular network. This gene is known to be involved in a large number of chromosomal rearrangements associated with leukemia and congenital fibrosarcoma. This gene encodes an ETS family transcription factor. The product of this gene contains two functional domains: a N-terminal pointed (PNT) domain that is involved in the protein-protein interactions with itself and other proteins, and a C-terminal DNA-binding domain. Gene knockout studies in mice suggest that it is required for hematopoiesis and maintenance of the developing vascular network. This gene is known to be involved in a large number of chromosomal rearrangements associated with leukemia and congenital fibrosarcoma. Publication Note: This RefSeq record includes a subset of the publications that are available for this gene. Please see the Entrez Gene record to access additional publications.

**Synonyms:**

ABL; TEL; THC5

**Note:**

Immunogen sequence homology: African clawed frog: 100%; Bovine: 100%; Chicken: 100%; Dog: 100%; Horse: 100%; Human: 100%; Mouse: 100%; Rabbit: 100%; Rat: 100%; Guinea pig: 92%; Zebrafish: 92%

**Protein Families:**

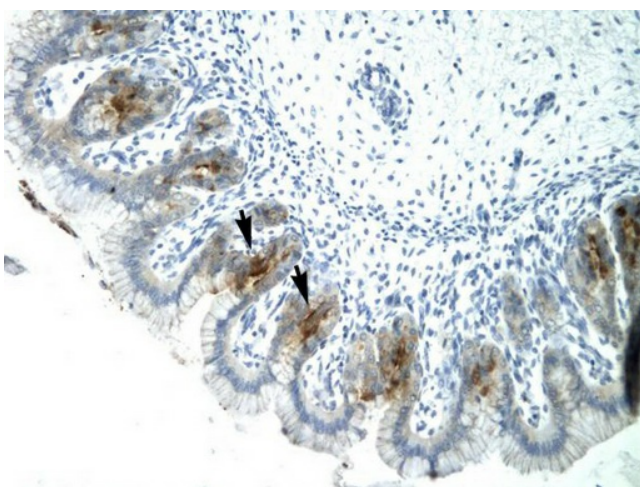
Druggable Genome, Transcription Factors

**Protein Pathways:**

Dorso-ventral axis formation

**Product images:**

WB Suggested Anti-ETV6 Antibody Titration: 0.2-1 ug/ml; ELISA Titer: 1:1562500; Positive Control: Jurkat cell lysate



Human Stomach