

## Product datasheet for **TA330076**

### TAF1 48 (TAF1A) Rabbit Polyclonal Antibody

#### Product data:

Product Type:	Primary Antibodies
Applications:	IHC, WB
Recommended Dilution:	IHC, WB
Reactivity:	Human
Host:	Rabbit
Isotype:	IgG
Clonality:	Polyclonal
Immunogen:	The immunogen for anti-TAF1A antibody: synthetic peptide directed towards the C terminal of human TAF1A. Synthetic peptide located within the following region: CEKAFVAGLLLGKGCYFRYILKQDHQILGKKIKRMKRSVKKYSIVNPRL
Formulation:	Liquid. Purified antibody supplied in 1x PBS buffer with 0.09% (w/v) sodium azide and 2% sucrose. <i>Note that this product is shipped as lyophilized powder to China customers.</i>
Conjugation:	Unconjugated
Storage:	Store at -20°C as received.
Stability:	Stable for 12 months from date of receipt.
Predicted Protein Size:	40 kDa
Gene Name:	TATA-box binding protein associated factor, RNA polymerase I subunit A
Database Link:	<a href="#">NP_647603</a> <a href="#">Entrez Gene 9015 Human</a> <a href="#">Q15573</a>
Background:	Initiation of transcription by RNA polymerase I requires the formation of a complex composed of the TATA-binding protein (TBP) and three TBP-associated factors (TAFs) specific for RNA polymerase I. This complex, known as SL1, binds to the core promoter of ribosomal RNA genes to position the polymerase properly and acts as a channel for regulatory signals. TAF1A encodes the smallest SL1-specific TAF.
Synonyms:	MGC:17061; RAFI48; SL1; TAFI48

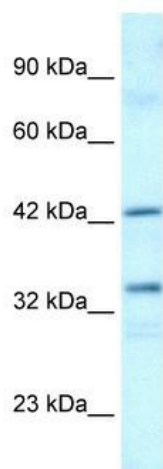


[View online »](#)

**Note:** Immunogen sequence homology: Human: 100%; Dog: 85%; Horse: 85%; Mouse: 85%; Pig: 85%; Rabbit: 85%; Rat: 85%; Bovine: 78%

**Protein Families:** Transcription Factors

**Product images:**



WB Suggested Anti-TAF1A Antibody Titration: 0.2-1 ug/ml; Positive Control: Jurkat cell lysate



Human Heart