

Product datasheet for **TA330074**

SSRP1 Rabbit Polyclonal Antibody

Product data:

Product Type:	Primary Antibodies
Applications:	WB
Recommended Dilution:	WB
Reactivity:	Human
Host:	Rabbit
Isotype:	IgG
Clonality:	Polyclonal
Immunogen:	The immunogen for anti-SSRP1 antibody: synthetic peptide directed towards the middle region of human SSRP1. Synthetic peptide located within the following region: MKEYEGGRGESSKRDKSKKKKKVKVKMEKKSTPSRGSSSKSSSRQLSESF
Formulation:	Liquid. Purified antibody supplied in 1x PBS buffer with 0.09% (w/v) sodium azide and 2% sucrose. <i>Note that this product is shipped as lyophilized powder to China customers.</i>
Conjugation:	Unconjugated
Storage:	Store at -20°C as received.
Stability:	Stable for 12 months from date of receipt.
Predicted Protein Size:	81 kDa
Gene Name:	structure specific recognition protein 1
Database Link:	NP_003137 Entrez Gene 6749 Human Q08945



[View online »](#)

Background:

SSRP1 is a subunit of a heterodimer that, along with SUPT16H, forms chromatin transcriptional elongation factor FACT. FACT interacts specifically with histones H2A/H2B to effect nucleosome disassembly and transcription elongation. FACT and cisplatin-damaged DNA may be crucial to the anticancer mechanism of cisplatin. SSRP1 contains a high mobility group box which most likely constitutes the structure recognition element for cisplatin-modified DNA. It also functions as a co-activator of the transcriptional activator p63. The protein encoded by this gene is a subunit of a heterodimer that, along with SUPT16H, forms chromatin transcriptional elongation factor FACT. FACT interacts specifically with histones H2A/H2B to effect nucleosome disassembly and transcription elongation. FACT and cisplatin-damaged DNA may be crucial to the anticancer mechanism of cisplatin. This encoded protein contains a high mobility group box which most likely constitutes the structure recognition element for cisplatin-modified DNA. This protein also functions as a co-activator of the transcriptional activator p63. An alternatively spliced transcript variant of this gene has been described, but its full-length nature is not known. Publication Note: This RefSeq record includes a subset of the publications that are available for this gene. Please see the Entrez Gene record to access additional publications.

Synonyms:

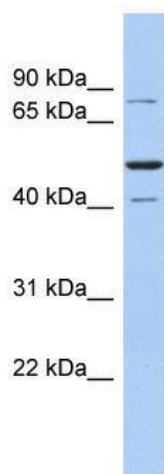
FACT; FACT80; T160

Note:

Immunogen sequence homology: Bovine: 100%; Human: 100%; Mouse: 100%; Rat: 100%

Protein Families:

Transcription Factors

Product images:


WB Suggested Anti-SSRP1 Antibody Titration: 0.2-1 ug/ml; ELISA Titer: 1:312500; Positive Control: Human Spleen