

## Product datasheet for **TA330073**

### SOX9 Rabbit Polyclonal Antibody

#### Product data:

|                         |  |
|-------------------------|--|
| Product Type:           | Primary Antibodies   |
| Applications:           | WB   |
| Recommended Dilution:   | WB   |
| Reactivity:             | Human, Mouse   |
| Host:                   | Rabbit   |
| Isotype:                | IgG  |
| Clonality:              | Polyclonal   |
| Immunogen:              | The immunogen for anti-SOX9 antibody: synthetic peptide directed towards the N terminal of human SOX9. Synthetic peptide located within the following region:<br>PCPSGSGSDTENTRPQENTFPKGEPLDKKESEEDKFPVCIREAVSQVLKG  |
| Formulation:            | Liquid. Purified antibody supplied in 1x PBS buffer with 0.09% (w/v) sodium azide and 2% sucrose.<br><i>Note that this product is shipped as lyophilized powder to China customers.</i>  |
| Conjugation:            | Unconjugated   |
| Storage:                | Store at -20°C as received.  |
| Stability:              | Stable for 12 months from date of receipt.   |
| Predicted Protein Size: | 56 kDa   |
| Gene Name:              | SRY-box 9  |
| Database Link:          | <a href="#">NP_000337</a><br><a href="#">Entrez Gene 20682 Mouse</a> <a href="#">Entrez Gene 6662 Human</a><br><a href="#">P48436</a>  |
| Background:             | SOX9 recognizes the sequence CCTTGAG along with other members of the HMG-box class DNA-binding proteins. It acts during chondrocyte differentiation and, with steroidogenic factor 1, regulates transcription of the anti-Muellerian hormone (AMH) gene. Deficiencies lead to the skeletal malformation syndrome campomelic dysplasia, frequently with sex reversal. |
| Synonyms:               | CMD1; CMPD1; SRA1; SRXX2; SRXY10   |

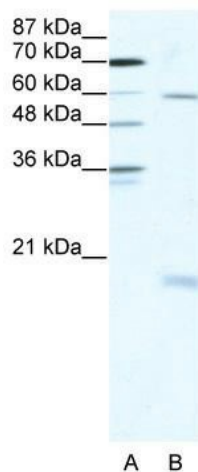


[View online »](#)

**Note:** Immunogen sequence homology: African clawed frog: 100%; Bovine: 100%; Chicken: 100%; Dog: 100%; Goat: 100%; Guinea pig: 100%; Human: 100%; Mouse: 100%; Pig: 100%; Rabbit: 100%; Rat: 100%; Zebrafish: 92%

**Protein Families:** Adult stem cells, Druggable Genome, Embryonic stem cells, ES Cell Differentiation/IPS, Induced pluripotent stem cells, Transcription Factors

**Product images:**



WB Suggested Anti-SOX9 Antibody Titration: 2.5ug/ml; ELISA Titer: 1:12500; Positive Control: HepG2 cell lysate. SOX9 is strongly supported by BioGPS gene expression data to be expressed in Human HepG2 cells