

Product datasheet for **TA330071**

ROR alpha (RORA) Rabbit Polyclonal Antibody

Product data:

Product Type:	Primary Antibodies
Applications:	IHC, WB
Recommended Dilution:	WB, IHC
Reactivity:	Human
Host:	Rabbit
Isotype:	IgG
Clonality:	Polyclonal
Immunogen:	The immunogen for anti-RORA antibody: synthetic peptide directed towards the N terminal of human RORA. Synthetic peptide located within the following region: FGILQILHQILSSGDAFVLTGVCCSWRQNGKPPYSQKEDKEVQTGYMNA
Formulation:	Liquid. Purified antibody supplied in 1x PBS buffer with 0.09% (w/v) sodium azide and 2% sucrose. <i>Note that this product is shipped as lyophilized powder to China customers.</i>
Conjugation:	Unconjugated
Storage:	Store at -20°C as received.
Stability:	Stable for 12 months from date of receipt.
Predicted Protein Size:	63 kDa
Gene Name:	RAR related orphan receptor A
Database Link:	NP_599022 Entrez Gene 6095 Human P35398
Background:	The protein encoded by RORA is a member of the NR1 subfamily of nuclear hormone receptors. It can bind as a monomer or as a homodimer to hormone response elements upstream of several genes to enhance the expression of those genes. The specific functions of this protein are not known, but it has been shown to interact with NM23-2, a nucleoside diphosphate kinase involved in organogenesis and differentiation, as well as with NM23-1, the product of a tumor metastasis suppressor candidate gene.
Synonyms:	NR1F1; ROR1; ROR2; ROR3; RZR-ALPHA; RZRA

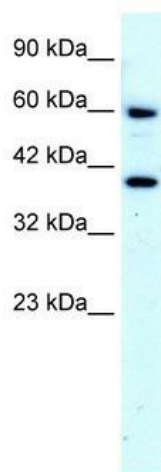


[View online »](#)

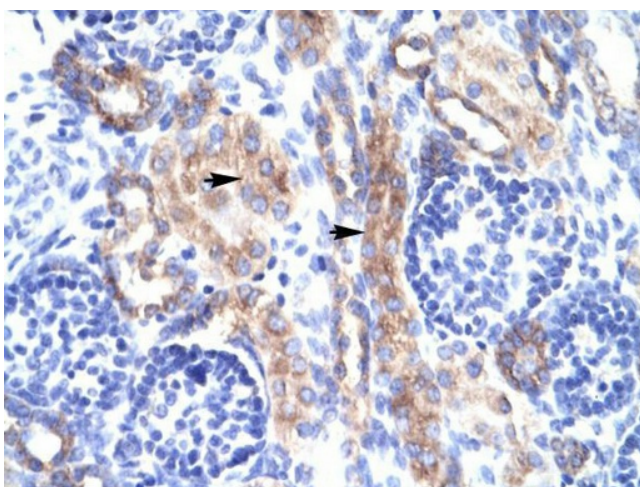
Note: Immunogen sequence homology: Human: 100%

Protein Families: Druggable Genome, Nuclear Hormone Receptor, Transcription Factors

Product images:



WB Suggested Anti-RORA Antibody Titration: 4.0ug/ml; Positive Control: HepG2 cell lysate



Human kidney