

Product datasheet for **TA330069**

Rel B (RELB) Rabbit Polyclonal Antibody

Product data:

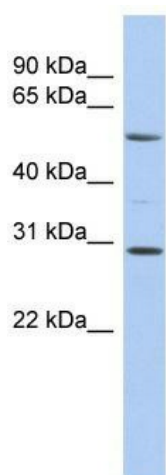
Product Type:	Primary Antibodies
Applications:	WB
Recommended Dilution:	WB
Reactivity:	Human
Host:	Rabbit
Isotype:	IgG
Clonality:	Polyclonal
Immunogen:	The immunogen for anti-RELB antibody: synthetic peptide directed towards the middle region of human RELB. Synthetic peptide located within the following region: FTYLP RDHDSYGVDKRRKRGMPDVLGELNSSDPHGIESKRRKKKPAILDH
Formulation:	Liquid. Purified antibody supplied in 1x PBS buffer with 0.09% (w/v) sodium azide and 2% sucrose. <i>Note that this product is shipped as lyophilized powder to China customers.</i>
Conjugation:	Unconjugated
Storage:	Store at -20°C as received.
Stability:	Stable for 12 months from date of receipt.
Predicted Protein Size:	62 kDa
Gene Name:	RELB proto-oncogene, NF-kB subunit
Database Link:	NP_006500 Entrez Gene 5971 Human Q01201
Background:	RELB neither associates with DNA nor with RELA/p65 or REL. It stimulates promoter activity in the presence of NFKB2/p49.
Synonyms:	I-REL; IREL; REL-B
Note:	Immunogen sequence homology: Human: 100%; Rabbit: 92%; Dog: 85%; Horse: 85%; Mouse: 85%; Bovine: 78%
Protein Families:	Druggable Genome, Transcription Factors



[View online »](#)

Protein Pathways: MAPK signaling pathway

Product images:



WB Suggested Anti-RELB Antibody Titration: 0.2-1 ug/ml; ELISA Titer: 1:7812500; Positive Control: THP-1 cell lysate