

## Product datasheet for **TA330068**

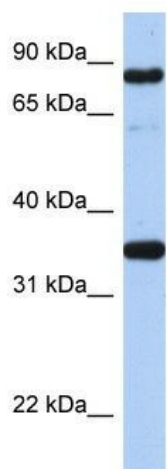
### Oct-1 (POU2F1) Rabbit Polyclonal Antibody

#### Product data:

Product Type:	Primary Antibodies
Applications:	WB
Recommended Dilution:	WB
Reactivity:	Human
Host:	Rabbit
Isotype:	IgG
Clonality:	Polyclonal
Immunogen:	The immunogen for anti-POU2F1 antibody: synthetic peptide directed towards the N terminal of human POU2F1. Synthetic peptide located within the following region: AISTAQAQAFGLHQLVQLAGTSLQAAAQSLNVQSKSNEESGDSQQPSQP
Formulation:	Liquid. Purified antibody supplied in 1x PBS buffer with 0.09% (w/v) sodium azide and 2% sucrose. <i>Note that this product is shipped as lyophilized powder to China customers.</i>
Conjugation:	Unconjugated
Storage:	Store at -20°C as received.
Stability:	Stable for 12 months from date of receipt.
Predicted Protein Size:	76 kDa
Gene Name:	POU class 2 homeobox 1
Database Link:	<a href="#">NP_002688</a> <a href="#">Entrez Gene 5451 Human P14859</a>
Background:	POU2F1 is a member of the POU family that represents the double-stranded DNA binding proteins specifically binding to the block C region.
Synonyms:	oct-1B; OCT1; OTF1
Note:	Immunogen sequence homology: Chicken: 100%; Human: 100%; Pig: 100%; Rabbit: 100%; Bovine: 92%; Dog: 92%; Mouse: 92%; Rat: 92%; Guinea pig: 85%
Protein Families:	Druggable Genome, Transcription Factors



[View online »](#)

**Product images:**

WB Suggested Anti-POU2F1 Antibody Titration:  
0.2-1 ug/ml; Positive Control: Transfected  
293TPOU2F1 is supported by BioGPS gene  
expression data to be expressed in HEK293T