

Product datasheet for **TA330065**

TCF4 Rabbit Polyclonal Antibody

Product data:

Product Type:	Primary Antibodies
Applications:	WB
Recommended Dilution:	WB
Reactivity:	Human
Host:	Rabbit
Isotype:	IgG
Clonality:	Polyclonal
Immunogen:	The immunogen for anti-TCF4 antibody: synthetic peptide directed towards the N terminal of human TCF4. Synthetic peptide located within the following region: MHHQQRMAALGTDKELSDLLDFSAMFSPPVSSGKNGPTSLASGHFTGSNV
Formulation:	Liquid. Purified antibody supplied in 1x PBS buffer with 0.09% (w/v) sodium azide and 2% sucrose. <i>Note that this product is shipped as lyophilized powder to China customers.</i>
Conjugation:	Unconjugated
Storage:	Store at -20°C as received.
Stability:	Stable for 12 months from date of receipt.
Predicted Protein Size:	71 kDa
Gene Name:	transcription factor 4
Database Link:	NP_003190 Entrez Gene 6925 Human P15884
Background:	TCF4 encodes transcription factor 4, a basic helix-turn-helix transcription factor. The protein recognizes an Ephrussi-box ('E-box') binding site ('CANNTG') - a motif first identified in immunoglobulin enhancers. TCF4 is expressed predominantly in pre-B-cells, although it is found in other tissues as well.
Synonyms:	bHLHb19; E2-2; FECD3; ITF-2; ITF2; PTHS; SEF-2; SEF2; SEF2-1; SEF2-1A; SEF2-1B; SEF2-1D; TCF-4

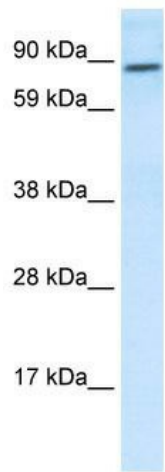


[View online »](#)

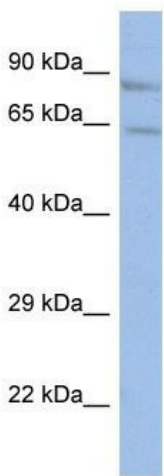
Note: Immunogen sequence homology: Guinea pig: 100%; Horse: 100%; Human: 100%; Mouse: 100%; Pig: 100%

Protein Families: Druggable Genome, ES Cell Differentiation/IPS, Transcription Factors

Product images:



WB Suggested Anti-TCF4 Antibody Titration: 0.2-1 ug/ml; Positive Control: Human Placenta



Host: Rabbit
 Target Name: TCF4
 Sample Tissue: HT1080 Cell Lysate
 Antibody Dilution: 1.0µg/ml

Host: Rabbit; Target Name: TCF4; Sample Tissue: HT1080 Whole Cell lysates; Antibody Dilution: 1.0ug/ml