

Product datasheet for **TA330064**

ILF1 (FOXK2) Rabbit Polyclonal Antibody

Product data:

| | |
|-------------------------|---|
| Product Type: | Primary Antibodies |
| Applications: | WB |
| Recommended Dilution: | WB |
| Reactivity: | Human |
| Host: | Rabbit |
| Isotype: | IgG |
| Clonality: | Polyclonal |
| Immunogen: | The immunogen for anti-FOXK2 antibody: synthetic peptide directed towards the C terminal of human FOXK2. Synthetic peptide located within the following region: SASLPTKRHNGDQPEQPELKRIKTEDGEGIVIALSVDTPPAAVREKGVQN |
| Formulation: | Liquid. Purified antibody supplied in 1x PBS buffer with 0.09% (w/v) sodium azide and 2% sucrose. <i>Note that this product is shipped as lyophilized powder to China customers.</i> |
| Conjugation: | Unconjugated |
| Storage: | Store at -20°C as received. |
| Stability: | Stable for 12 months from date of receipt. |
| Predicted Protein Size: | 69 kDa |
| Gene Name: | forkhead box K2 |
| Database Link: | NP_004505 Entrez Gene 3607 Human Q01167 |
| Background: | FOXK2 contains a fork head DNA binding domain. This protein can bind to the purine-rich motifs of the HIV long terminal repeat (LTR), and to the similar purine-rich motif in the interleukin 2 (IL2) promoter. It may be involved in the regulation of viral and cellular promoter elements. Three alternatively spliced transcript variants encoding distinct isoforms have been described. |
| Synonyms: | ILF; ILF-1; ILF1 |

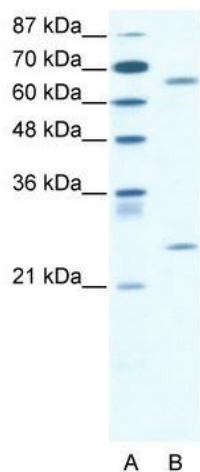


[View online »](#)

Note: Immunogen sequence homology: Human: 100%; Horse: 92%; Rabbit: 84%; Mouse: 83%; Rat: 83%

Protein Families: Druggable Genome, Transcription Factors

Product images:



WB Suggested Anti-FOXK2 Antibody Titration:
2.5ug/ml; ELISA Titer: 1:62500; Positive Control:
Jurkat cell lysate