

Product datasheet for **TA330063**

TCF12 Rabbit Polyclonal Antibody

Product data:

Product Type:	Primary Antibodies
Applications:	WB
Recommended Dilution:	WB
Reactivity:	Human
Host:	Rabbit
Isotype:	IgG
Clonality:	Polyclonal
Immunogen:	The immunogen for anti-TCF12 antibody: synthetic peptide directed towards the middle region of human TCF12. Synthetic peptide located within the following region: GGLQSQSGTVTTEIKTENKEKDENLHEPPSSDDMKSDDESSQKDIKVVSS
Formulation:	Liquid. Purified antibody supplied in 1x PBS buffer with 0.09% (w/v) sodium azide and 2% sucrose. <i>Note that this product is shipped as lyophilized powder to China customers.</i>
Conjugation:	Unconjugated
Storage:	Store at -20°C as received.
Stability:	Stable for 12 months from date of receipt.
Predicted Protein Size:	73 kDa
Gene Name:	transcription factor 12
Database Link:	NP_003196 Entrez Gene 6938 Human Q99081



[View online »](#)

Background:

TCF12 encodes a protein that is a member of the basic helix-loop-helix (bHLH) E-protein family which recognizes the consensus binding site (E-box) CANNTG. This encoded protein is expressed in many tissues, among them skeletal muscle, thymus, B- and T-cell. The protein encoded by this gene is a member of the basic helix-loop-helix (bHLH) E-protein family that recognizes the consensus binding site (E-box) CANNTG. This encoded protein is expressed in many tissues, among them skeletal muscle, thymus, B- and T-cells, and may participate in regulating lineage-specific gene expression through the formation of heterodimers with other bHLH E-proteins. Several alternatively spliced transcript variants of this gene have been described, but the full-length nature of some of these variants has not been determined.

Synonyms:

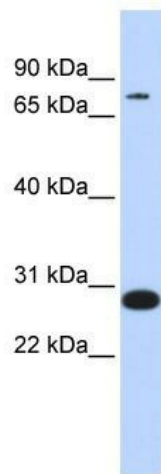
bHLHb20; CRS3; HEB; HsT17266; HTF4

Note:

Immunogen sequence homology: Bovine: 100%; Dog: 100%; Guinea pig: 100%; Horse: 100%; Human: 100%; Mouse: 100%; Pig: 100%; Rat: 100%

Protein Families:

Druggable Genome, Transcription Factors

Product images:

WB Suggested Anti-TCF12 Antibody Titration: 0.2-1 ug/ml; ELISA Titer: 1:312500; Positive Control: Hela cell lysate