

Product datasheet for **TA330062**

TCF12 Rabbit Polyclonal Antibody

Product data:

Product Type:	Primary Antibodies
Applications:	WB
Recommended Dilution:	WB
Reactivity:	Human, Mouse
Host:	Rabbit
Isotype:	IgG
Clonality:	Polyclonal
Immunogen:	The immunogen for anti-TCF12 antibody: synthetic peptide directed towards the N terminal of human TCF12. Synthetic peptide located within the following region: QQQRMAAIGTDKELSDLLDFSAMFSPVNSGKTRPTTLGSSQFSGSGIDE
Formulation:	Liquid. Purified antibody supplied in 1x PBS buffer with 0.09% (w/v) sodium azide and 2% sucrose. <i>Note that this product is shipped as lyophilized powder to China customers.</i>
Conjugation:	Unconjugated
Storage:	Store at -20°C as received.
Stability:	Stable for 12 months from date of receipt.
Predicted Protein Size:	73 kDa
Gene Name:	transcription factor 12
Database Link:	NP_996919 Entrez Gene 21406 Mouse Entrez Gene 6938 Human Q99081



[View online »](#)

Background: TCF12 encodes a protein that is a member of the basic helix-loop-helix (bHLH) E-protein family which recognizes the consensus binding site (E-box) CANNTG. This encoded protein is expressed in many tissues, among them skeletal muscle, thymus, B- and T-cells, and may participate in regulating lineage-specific gene expression through the formation of heterodimers with other bHLH E-proteins. The protein encoded by this gene is a member of the basic helix-loop-helix (bHLH) E-protein family that recognizes the consensus binding site (E-box) CANNTG. This encoded protein is expressed in many tissues, among them skeletal muscle, thymus, B- and T-cells, and may participate in regulating lineage-specific gene expression through the formation of heterodimers with other bHLH E-proteins. Several alternatively spliced transcript variants of this gene have been described, but the full-length nature of some of these variants has not been determined.

Synonyms: bHLHb20; CRS3; HEB; HsT17266; HTF4

Note: Immunogen sequence homology: Bovine: 100%; Human: 100%; Mouse: 100%; Pig: 100%; Zebrafish: 92%

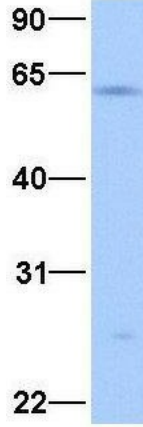
Protein Families: Druggable Genome, Transcription Factors

Product images:



WB Suggested Anti-TCF12 Antibody Titration:
0.06ug/ml; ELISA Titer: 1:1562500; Positive
Control: Human Lung

TCF12



Rabbit Anti-TCF12
Sample Type: Human Fetal Brain
Antibody Concentration: 1ug/mL

Host: Rabbit; Target Name: TCF12; Sample
Tissue: Human Fetal Brain; Antibody Dilution:
1.0ug/ml