

Product datasheet for **TA330057**

c Rel (REL) Rabbit Polyclonal Antibody

Product data:

Product Type:	Primary Antibodies
Applications:	WB
Recommended Dilution:	WB
Reactivity:	Human
Host:	Rabbit
Isotype:	IgG
Clonality:	Polyclonal
Immunogen:	The immunogen for anti-REL antibody: synthetic peptide directed towards the N terminal of human REL. Synthetic peptide located within the following region: ASGAYNPYIEIIEQPRQRGMRFYKCEGRSAGSIPGEHSTDNNRTYPSIQ
Formulation:	Liquid. Purified antibody supplied in 1x PBS buffer with 0.09% (w/v) sodium azide and 2% sucrose. <i>Note that this product is shipped as lyophilized powder to China customers.</i>
Conjugation:	Unconjugated
Storage:	Store at -20°C as received.
Stability:	Stable for 12 months from date of receipt.
Predicted Protein Size:	68 kDa
Gene Name:	REL proto-oncogene, NF-kB subunit
Database Link:	NP_002899 Entrez Gene 5966 Human Q04864



[View online »](#)

Background:

REL is a member of the Rel/NFKB family, which also includes RELA, RELB, NFKB1, and NFKB2. These proteins are related through a highly conserved N-terminal region termed the 'Rel domain,' which is responsible for DNA binding, dimerization, nuclear localization, and binding to the NFKB inhibitor. The REL gene encodes c-Rel, a transcription factor that is a member of the Rel/NFKB family, which also includes RELA (MIM 164014), RELB (604758), NFKB1 (MIM 164011), and NFKB2 (MIM 164012). These proteins are related through a highly conserved N-terminal region termed the 'Rel domain,' which is responsible for DNA binding, dimerization, nuclear localization, and binding to the NFKB inhibitor (MIM 164008) (Belguise and Sonenshein, 2007 [PubMed 18037997]). [supplied by OMIM]. Publication Note: This RefSeq record includes a subset of the publications that are available for this gene. Please see the Entrez Gene record to access additional publications. PRIMARYREFSEQ_SPAN PRIMARY_IDENTIFIER PRIMARY_SPAN COMP 1-174 CN414487.1 2-175 175-2323 X75042.1 128-2276 2324-2457 BX111941.1 575-708 2458-2592 AA279919.1 1-135 c

Synonyms:

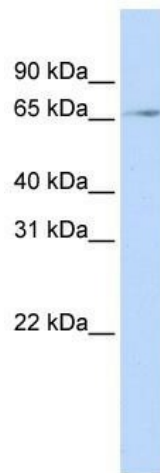
C-Rel

Note:

Immunogen sequence homology: Bovine: 100%; Dog: 100%; Horse: 100%; Human: 100%; Rabbit: 100%; Mouse: 92%; Rat: 92%; African clawed frog: 85%; Chicken: 85%; Guinea pig: 85%; Pig: 85%; Zebrafish: 85%

Protein Families:

Druggable Genome, Transcription Factors

Product images:

WB Suggested Anti-REL Antibody Titration: 0.2-1 ug/ml; ELISA Titer: 1:312500; Positive Control: Hela cell lysate