

Product datasheet for **TA330054**

B MyB (MYBL2) Rabbit Polyclonal Antibody

Product data:

Product Type:	Primary Antibodies
Applications:	IHC, WB
Recommended Dilution:	WB, IHC
Reactivity:	Human
Host:	Rabbit
Isotype:	IgG
Clonality:	Polyclonal
Immunogen:	The immunogen for anti-MYBL2 antibody: synthetic peptide directed towards the N terminal of human MYBL2. Synthetic peptide located within the following region: RCEDLDELHYQDTSQVPEQRDSKCKVKTWHEEDELRLALVRQFGQQDWK
Formulation:	Liquid. Purified antibody supplied in 1x PBS buffer with 0.09% (w/v) sodium azide and 2% sucrose. <i>Note that this product is shipped as lyophilized powder to China customers.</i>
Conjugation:	Unconjugated
Storage:	Store at -20°C as received.
Stability:	Stable for 12 months from date of receipt.
Predicted Protein Size:	79 kDa
Gene Name:	MYB proto-oncogene like 2
Database Link:	NP_002457 Entrez Gene 4605 Human P10244
Background:	Myb-Related Protein B (MYBL2), a member of the MYB family of transcription factor genes, is a nuclear protein involved in cell cycle progression. The encoded protein is phosphorylated by cyclin A/cyclin-dependent kinase 2 during the S-phase of the cell cycle and possesses both activator and repressor activities. It has been shown to activate the cell division cycle 2, cyclin D1, and insulin-like growth factor-binding protein 5 genes. Transcript variants may exist for this gene, but their full-length natures have not been determined.
Synonyms:	B-MYB; BMYB

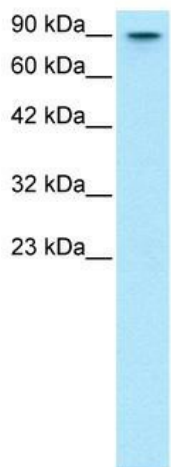


[View online »](#)

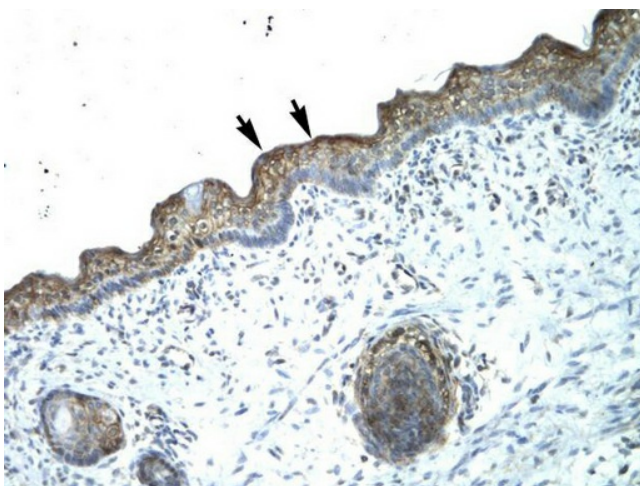
Note: Immunogen sequence homology: Bovine: 100%; Chicken: 100%; Dog: 100%; Horse: 100%; Human: 100%; Rabbit: 92%; Guinea pig: 85%; Zebrafish: 83%; Rat: 78%

Protein Families: Druggable Genome, Stem cell - Pluripotency, Transcription Factors

Product images:



WB Suggested Anti-MYBL2 Antibody Titration: 0.2-1 ug/ml; Positive Control: HepG2 cell lysate
 MYBL2 is supported by BioGPS gene expression data to be expressed in HepG2



Human Spermatophore