

## Product datasheet for **TA330053**

### SOX8 Rabbit Polyclonal Antibody

#### Product data:

Product Type:	Primary Antibodies
Applications:	WB
Recommended Dilution:	WB
Reactivity:	Human
Host:	Rabbit
Isotype:	IgG
Clonality:	Polyclonal
Immunogen:	The immunogen for anti-SOX8 antibody: synthetic peptide directed towards the C terminal of human SOX8. Synthetic peptide located within the following region: ASPTETGPPRPHIKTEQPSPGHYGDQPRGSPDYGSCSGQSSATPAAPAGP
Formulation:	Liquid. Purified antibody supplied in 1x PBS buffer with 0.09% (w/v) sodium azide and 2% sucrose.
Conjugation:	Unconjugated
Storage:	Store at -20°C as received.
Stability:	Stable for 12 months from date of receipt.
Predicted Protein Size:	47 kDa
Gene Name:	SRY-box 8
Database Link:	<a href="#">NP_055402</a> <a href="#">Entrez Gene 30812 Human</a> <a href="#">P57073</a>



[View online »](#)

**Background:**

SOX8 is a member of the SOX (SRY-related HMG-box) family of transcription factors involved in the regulation of embryonic development and in the determination of the cell fate. It may act as a transcriptional activator after forming a protein complex with other proteins. This protein may be involved in brain development and function. Haploinsufficiency for this protein may contribute to the mental retardation found in haemoglobin H-related mental retardation (ART-16 syndrome). This gene encodes a member of the SOX (SRY-related HMG-box) family of transcription factors involved in the regulation of embryonic development and in the determination of the cell fate. The encoded protein may act as a transcriptional activator after forming a protein complex with other proteins. This protein may be involved in brain development and function. Haploinsufficiency for this protein may contribute to the mental retardation found in haemoglobin H-related mental retardation (ART-16 syndrome).

**Synonyms:**

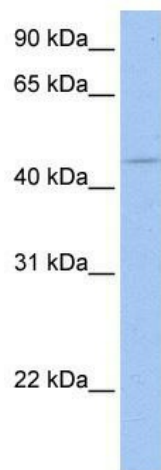
MGC24837

**Note:**

Immunogen sequence homology: Human: 100%; Bovine: 92%; Dog: 92%; Horse: 92%; Guinea pig: 85%; Rat: 85%; Mouse: 78%; African clawed frog: 76%

**Protein Families:**

Transcription Factors

**Product images:**

WB Suggested Anti-SOX8 Antibody Titration: 0.2-1 ug/ml; ELISA Titer: 1:12500; Positive Control: Hela cell lysate