

## Product datasheet for **TA330052**

### Mineralocorticoid Receptor (NR3C2) Rabbit Polyclonal Antibody

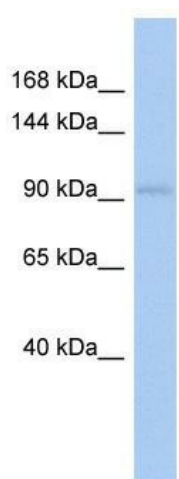
#### Product data:

Product Type:	Primary Antibodies
Applications:	WB
Recommended Dilution:	WB
Reactivity:	Human
Host:	Rabbit
Isotype:	IgG
Clonality:	Polyclonal
Immunogen:	The immunogen for anti-NR3C2 antibody: synthetic peptide directed towards the C terminal of human NR3C2. Synthetic peptide located within the following region: VSDLLEFCFYTFRESHALKVEFPAMLVEIISDQLPKVESGNAKPLYFHRK
Formulation:	Liquid. Purified antibody supplied in 1x PBS buffer with 0.09% (w/v) sodium azide and 2% sucrose. <i>Note that this product is shipped as lyophilized powder to China customers.</i>
Conjugation:	Unconjugated
Storage:	Store at -20°C as received.
Stability:	Stable for 12 months from date of receipt.
Predicted Protein Size:	94 kDa
Gene Name:	nuclear receptor subfamily 3 group C member 2
Database Link:	<a href="#">NP_001159576</a> <a href="#">Entrez Gene 4306 Human P08235</a>
Background:	NR3C2 is a receptor for both mineralocorticoids (MC) such as aldosterone and glucocorticoids (GC) such as corticosterone or cortisol. It binds to mineralocorticoid response elements (MRE) and transactivates target genes. The effect of MC is to increase ion and water transport and thus raise extracellular fluid volume and blood pressure and lower potassium levels.
Synonyms:	MCR; MLR; MR; NR3C2VIT
Note:	Immunogen sequence homology: Chicken: 100%; Horse: 100%; Human: 100%; Mouse: 100%; Rat: 100%; African clawed frog: 92%; Bovine: 92%



[View online »](#)

Protein Families: Druggable Genome, Nuclear Hormone Receptor, Transcription Factors

**Product images:**

WB Suggested Anti-NR3C2 Antibody Titration:  
0.2-1 ug/ml; ELISA Titer: 1:12500; Positive Control:  
PANC1 cell lysate