

Product datasheet for **TA330050**

SMAD6 Rabbit Polyclonal Antibody

Product data:

Product Type:	Primary Antibodies
Applications:	WB
Recommended Dilution:	WB
Reactivity:	Human
Host:	Rabbit
Isotype:	IgG
Clonality:	Polyclonal
Immunogen:	The immunogen for anti-SMAD6 antibody: synthetic peptide directed towards the N terminal of human SMAD6. Synthetic peptide located within the following region: GAPRDASDPLAGAALEPAGGGRSREARSRLLEQLKTVTYSLLKRLKE
Formulation:	Liquid. Purified antibody supplied in 1x PBS buffer with 0.09% (w/v) sodium azide and 2% sucrose. <i>Note that this product is shipped as lyophilized powder to China customers.</i>
Conjugation:	Unconjugated
Storage:	Store at -20°C as received.
Stability:	Stable for 12 months from date of receipt.
Predicted Protein Size:	53 kDa
Gene Name:	SMAD family member 6
Database Link:	NP_005576 Entrez Gene 4091 Human O43541
Background:	SMAD6 (mothers against decapentaplegic homolog 6) is an antagonist of signaling by TGF-beta (transforming growth factor) type 1 receptor superfamily members; has been shown to inhibit selectively BMP (bone morphogenetic proteins) signaling by competing with the co-SMAD SMAD4 for receptor-activated SMAD1. SMAD6 is an inhibitory SMAD (I-SMAD) or antagonistic SMAD.
Synonyms:	AOVD2; HsT17432; MADH6; MADH7
Note:	Immunogen sequence homology: Human: 100%; Dog: 91%; Bovine: 85%; Pig: 85%

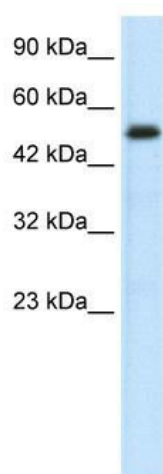


[View online »](#)

Protein Families: Cancer stem cells, Druggable Genome, ES Cell Differentiation/IPS, Transcription Factors

Protein Pathways: TGF-beta signaling pathway

Product images:



WB Suggested Anti-SMAD6 Antibody Titration: 0.2-1 ug/ml; Positive Control: Jurkat cell lysate
There is BioGPS gene expression data showing that SMAD6 is expressed in Jurkat