

Product datasheet for **TA330049**

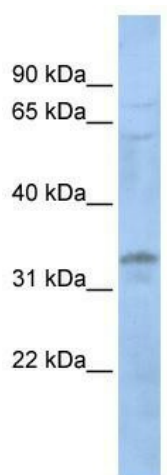
LYL1 Rabbit Polyclonal Antibody

Product data:

| | |
|-------------------------|---------------------------------------------------------------------------------------------------------------------------------------------------------------------------------------------------------------------|
| Product Type: | Primary Antibodies |
| Applications: | WB |
| Recommended Dilution: | WB |
| Reactivity: | Human |
| Host: | Rabbit |
| Isotype: | IgG |
| Clonality: | Polyclonal |
| Immunogen: | The immunogen for anti-LYL1 antibody: synthetic peptide directed towards the N terminal of human LYL1. Synthetic peptide located within the following region: ASPGPPQVEEVGHRGGSSPRLPPGVPVISLGHSRPPGVAMPPTTELGLTR |
| Formulation: | Liquid. Purified antibody supplied in 1x PBS buffer with 0.09% (w/v) sodium azide and 2% sucrose. |
| Conjugation: | Unconjugated |
| Storage: | Store at -20°C as received. |
| Stability: | Stable for 12 months from date of receipt. |
| Predicted Protein Size: | 30 kDa |
| Gene Name: | lymphoblastic leukemia associated hematopoiesis regulator 1 |
| Database Link: | NP_005574 Entrez Gene 4066 Human P12980 |
| Background: | LYL1 contains 1 basic helix-loop-helix (bHLH) domain. A chromosomal aberration, translocation t (7;19)(q35;p13) with TCRB, involving LYL1 may be a cause of a form of T-cell acute lymphoblastic leukemia (T-ALL). |
| Synonyms: | bHLHa18 |
| Note: | Immunogen sequence homology: Human: 100%; Pig: 92% |
| Protein Families: | Druggable Genome, Transcription Factors |



[View online »](#)

Product images:

WB Suggested Anti-LYL1 Antibody Titration: 0.2-1 ug/ml; Positive Control: 721_B cell lysate. LYL1 is supported by BioGPS gene expression data to be expressed in 721_B