

Product datasheet for **TA330048**

MYPOP Rabbit Polyclonal Antibody

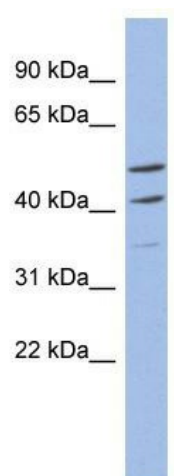
Product data:

Product Type:	Primary Antibodies
Applications:	WB
Recommended Dilution:	WB
Reactivity:	Human
Host:	Rabbit
Isotype:	IgG
Clonality:	Polyclonal
Immunogen:	The immunogen for anti-MYPOP antibody: synthetic peptide directed towards the N terminal of human LOC339344. Synthetic peptide located within the following region: RTGQEVQKRWNDFKRRTKEKLARVPHSTQGAGPAAEDAFSAEEETIFAIL
Formulation:	Liquid. Purified antibody supplied in 1x PBS buffer with 0.09% (w/v) sodium azide and 2% sucrose.
Conjugation:	Unconjugated
Storage:	Store at -20°C as received.
Stability:	Stable for 12 months from date of receipt.
Predicted Protein Size:	42 kDa
Gene Name:	Myb-related transcription factor, partner of profilin
Database Link:	NP_001012661 Entrez Gene 339344 Human Q86VE0
Background:	LOC339344 is a transcriptional repressor; DNA-binding protein that specifically recognizes the core sequence 5'-YAAC[GT]G-3'. Dimerization with PFN1 reduces its DNA-binding capacity.
Synonyms:	P42pop
Note:	Immunogen sequence homology: Bovine: 100%; Dog: 100%; Guinea pig: 100%; Human: 100%; Mouse: 100%; Pig: 100%; Rat: 100%; African clawed frog: 92%



[View online »](#)

Product images:



WB Suggested Anti-MYPOP Antibody Titration:
0.2-1 ug/ml; ELISA Titer: 1:62500; Positive Control:
COLO205 cell lysate