

Product datasheet for **TA330045**

SREBP2 (SREBF2) Rabbit Polyclonal Antibody

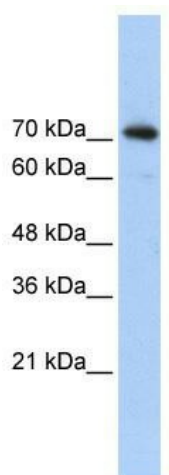
Product data:

Product Type:	Primary Antibodies
Applications:	WB
Recommended Dilution:	WB
Reactivity:	Human
Host:	Rabbit
Isotype:	IgG
Clonality:	Polyclonal
Immunogen:	The immunogen for anti-SREBF2 antibody: synthetic peptide directed towards the middle region of human SREBF2. Synthetic peptide located within the following region: VMMGQEKVPIKQVPGGVKQLEPPKEGERRTTHNIIKRYRSSINDKIIL
Formulation:	Liquid. Purified antibody supplied in 1x PBS buffer with 0.09% (w/v) sodium azide and 2% sucrose. <i>Note that this product is shipped as lyophilized powder to China customers.</i>
Conjugation:	Unconjugated
Storage:	Store at -20°C as received.
Stability:	Stable for 12 months from date of receipt.
Predicted Protein Size:	74 kDa
Gene Name:	sterol regulatory element binding transcription factor 2
Database Link:	NP_004590 Entrez Gene 6721 Human Q12772
Background:	SREBF2 encodes a ubiquitously expressed transcription factor that controls cholesterol homeostasis by stimulating transcription of sterol-regulated genes. The encoded protein contains a basic helix-loop-helix-leucine zipper (bHLH-Zip) domain.
Synonyms:	bHLHd2; SREBP-2; SREBP2
Note:	Immunogen sequence homology: Bovine: 100%; Chicken: 100%; Dog: 100%; Guinea pig: 100%; Horse: 100%; Human: 100%; Rat: 100%
Protein Families:	Druggable Genome, Transcription Factors



[View online »](#)

Product images:



WB Suggested Anti-SREBF2 Antibody Titration:
0.2-1 ug/ml; ELISA Titer: 1:7812500; Positive
Control: Transfected 293TSREBF2 is supported by
BioGPS gene expression data to be expressed in
HEK293T