

Product datasheet for **TA330041**

NFYC Rabbit Polyclonal Antibody

Product data:

Product Type:	Primary Antibodies
Applications:	IHC, WB
Recommended Dilution:	WB, IHC
Reactivity:	Human
Host:	Rabbit
Isotype:	IgG
Clonality:	Polyclonal
Immunogen:	The immunogen for anti-NFYC antibody: synthetic peptide directed towards the C terminal of human NFYC. Synthetic peptide located within the following region: MTSLSPLHPSQQLYQIQVTMPAGQDLAQPMFIQSANQPSDGQAPQVTGD
Formulation:	Liquid. Purified antibody supplied in 1x PBS buffer with 0.09% (w/v) sodium azide and 2% sucrose. <i>Note that this product is shipped as lyophilized powder to China customers.</i>
Conjugation:	Unconjugated
Storage:	Store at -20°C as received.
Stability:	Stable for 12 months from date of receipt.
Predicted Protein Size:	50 kDa
Gene Name:	nuclear transcription factor Y subunit gamma
Database Link:	NP_001136059 Entrez Gene 4802 Human Q13952
Background:	NFYC is one subunit of a trimeric complex, forming a highly conserved transcription factor that binds with high specificity to CCAAT motifs in the promoter regions in a variety of genes. NFYC forms a tight dimer with the B subunit, a prerequisite for subunit A association. The resulting trimer binds to DNA with high specificity and affinity.
Synonyms:	CBF-C; CBFC; H1TF2A; HAP5; HSM; NF-YC
Note:	Immunogen sequence homology: Bovine: 100%; Dog: 100%; Guinea pig: 100%; Human: 100%; Horse: 92%; Mouse: 92%; Pig: 92%; Rat: 92%; Rabbit: 85%; Chicken: 78%

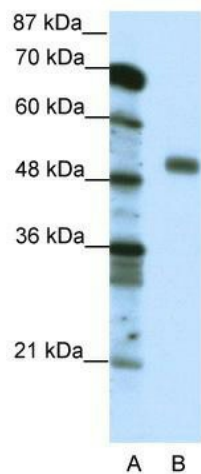


[View online »](#)

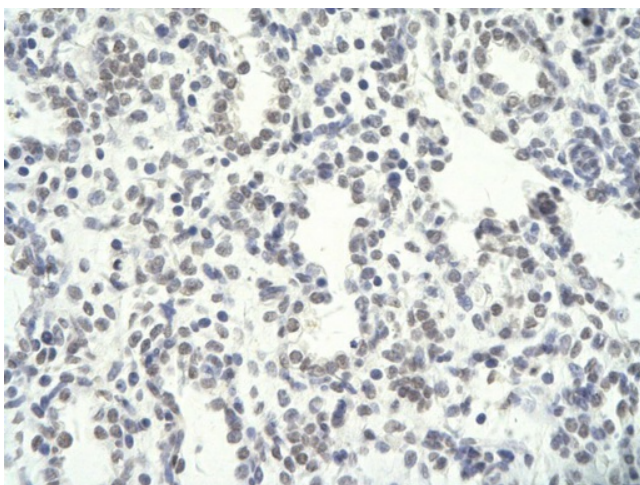
Protein Families: Transcription Factors

Protein Pathways: Antigen processing and presentation

Product images:



WB Suggested Anti-NFYC Antibody Titration: 0.2-1 ug/ml; ELISA Titer: 1:62500; Positive Control: Jurkat cell lysate. NFYC is strongly supported by BioGPS gene expression data to be expressed in Human Jurkat cells



Rabbit Anti-NFYC antibody; Paraffin Embedded Tissue: Human Lung cell; Cellular Data: Epithelial cells of renal tubule; Antibody Concentration: 4.0-8.0 ug/ml; Magnification: 400X