

Product datasheet for **TA330040**

NFX1 Rabbit Polyclonal Antibody

Product data:

Product Type:	Primary Antibodies
Applications:	IHC, WB
Recommended Dilution:	WB, IHC
Reactivity:	Human
Host:	Rabbit
Isotype:	IgG
Clonality:	Polyclonal
Immunogen:	The immunogen for anti-NFX1 antibody: synthetic peptide directed towards the middle region of human NFX1. Synthetic peptide located within the following region: TLTGVLEREMQARPPPIPHHRHQSDKNPGSSNLQKITKEPIIDYFDVQD
Formulation:	Liquid. Purified antibody supplied in 1x PBS buffer with 0.09% (w/v) sodium azide and 2% sucrose.
Conjugation:	Unconjugated
Storage:	Store at -20°C as received.
Stability:	Stable for 12 months from date of receipt.
Predicted Protein Size:	124 kDa
Gene Name:	nuclear transcription factor, X-box binding 1
Database Link:	NP_002495 Entrez Gene 4799 Human Q12986



[View online »](#)

Background:

MHC class II gene expression is controlled primarily at the transcriptional level by transcription factors that bind to the X and Y boxes, two highly conserved elements in the proximal promoter of MHC class II genes. NFX1 is a transcriptional repressor capable of binding to the conserved X box motif of HLA-DRA and other MHC class II genes in vitro. The protein may play a role in regulating the duration of an inflammatory response by limiting the period in which class II MHC molecules are induced by IFN-gamma. MHC class II gene expression is controlled primarily at the transcriptional level by transcription factors that bind to the X and Y boxes, two highly conserved elements in the proximal promoter of MHC class II genes. The protein encoded by this gene is a transcriptional repressor capable of binding to the conserved X box motif of HLA-DRA and other MHC class II genes in vitro. The protein may play a role in regulating the duration of an inflammatory response by limiting the period in which class II MHC molecules are induced by IFN-gamma. Three alternative splice variants, each of which encodes a different isoform, have been identified.

Synonyms:

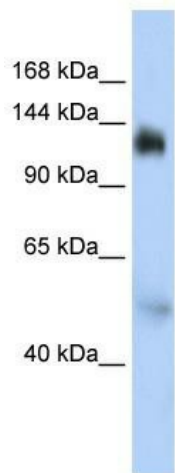
NFX2; TEG-42; Tex42

Note:

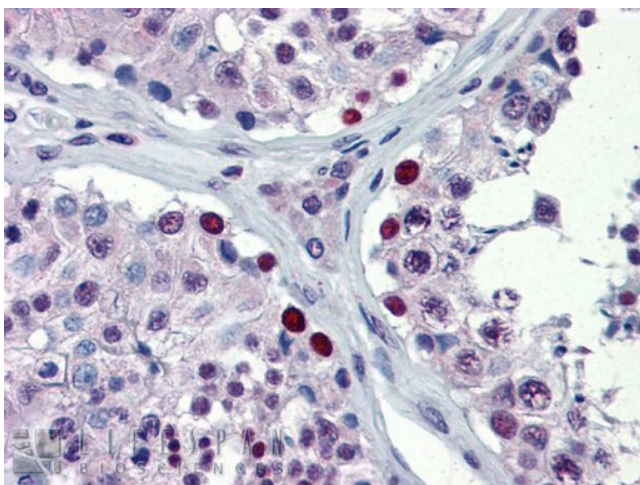
Immunogen sequence homology: Human: 100%; Bovine: 85%; Dog: 85%; Rabbit: 85%; Rat: 85%; Mouse: 76%

Protein Families:

Druggable Genome, Transcription Factors

Product images:


WB Suggested Anti-NFX1 Antibody Titration: 0.2-1 ug/ml; ELISA Titer: 1:312500; Positive Control: HepG2 cell lysate



Immunohistochemistry with Human Testis lysate tissue