

## Product datasheet for **TA330038**

### v Myb (MYBL1) Rabbit Polyclonal Antibody

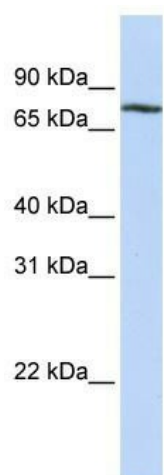
#### Product data:

|                         |                                                                                                                                                                                                                                              |
|-------------------------|----------------------------------------------------------------------------------------------------------------------------------------------------------------------------------------------------------------------------------------------|
| Product Type:           | Primary Antibodies                                                                                                                                                                                                                           |
| Applications:           | WB                                                                                                                                                                                                                                           |
| Recommended Dilution:   | WB                                                                                                                                                                                                                                           |
| Reactivity:             | Human                                                                                                                                                                                                                                        |
| Host:                   | Rabbit                                                                                                                                                                                                                                       |
| Isotype:                | IgG                                                                                                                                                                                                                                          |
| Clonality:              | Polyclonal                                                                                                                                                                                                                                   |
| Immunogen:              | The immunogen for anti-MYBL1 antibody: synthetic peptide directed towards the C terminal of human MYBL1. Synthetic peptide located within the following region: RCNLIPEKQDINSTNKTYTLTKKKPNPNTSKVVKLEKNLQSNCEWETVVY                           |
| Formulation:            | Liquid. Purified antibody supplied in 1x PBS buffer with 0.09% (w/v) sodium azide and 2% sucrose.<br><i>Note that this product is shipped as lyophilized powder to China customers.</i>                                                      |
| Conjugation:            | Unconjugated                                                                                                                                                                                                                                 |
| Storage:                | Store at -20°C as received.                                                                                                                                                                                                                  |
| Stability:              | Stable for 12 months from date of receipt.                                                                                                                                                                                                   |
| Predicted Protein Size: | 86 kDa                                                                                                                                                                                                                                       |
| Gene Name:              | MYB proto-oncogene like 1                                                                                                                                                                                                                    |
| Database Link:          | <a href="#">NP_001073885</a><br><a href="#">Entrez Gene 4603 Human P10243</a>                                                                                                                                                                |
| Background:             | MYBL1 is strong transcriptional activator; DNA-binding protein that specifically recognize the sequence 5'-YAAC[GT]G-3'. It could have a role in the proliferation and/or differentiation of neurogenic, spermatogenic and B-lymphoid cells. |
| Synonyms:               | A-MYB; AMYB                                                                                                                                                                                                                                  |
| Note:                   | Immunogen sequence homology: Guinea pig: 100%; Human: 100%; Bovine: 92%; Horse: 92%; Rabbit: 92%; Rat: 92%; Dog: 85%; Mouse: 83%                                                                                                             |



[View online »](#)

## Product images:



WB Suggested Anti-MYBL1 Antibody Titration:  
0.2-1 ug/ml; ELISA Titer: 1:312500; Positive  
Control: HepG2 cell lysate