

## Product datasheet for **TA330033**

### TAL2 Rabbit Polyclonal Antibody

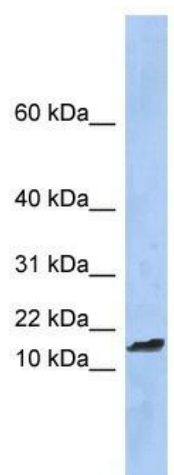
#### Product data:

Product Type:	Primary Antibodies
Applications:	WB
Recommended Dilution:	WB
Reactivity:	Human
Host:	Rabbit
Isotype:	IgG
Clonality:	Polyclonal
Immunogen:	The immunogen for anti-TAL2 antibody: synthetic peptide directed towards the middle region of human TAL2. Synthetic peptide located within the following region: LGEQSLQQTGVAAQGNILGLFPQGPHLPGLDRTLLENYQVPSPGPSHHI
Formulation:	Liquid. Purified antibody supplied in 1x PBS buffer with 0.09% (w/v) sodium azide and 2% sucrose. <i>Note that this product is shipped as lyophilized powder to China customers.</i>
Conjugation:	Unconjugated
Storage:	Store at -20°C as received.
Stability:	Stable for 12 months from date of receipt.
Predicted Protein Size:	12 kDa
Gene Name:	T-cell acute lymphocytic leukemia 2
Database Link:	<a href="#">NP_005412</a> <a href="#">Entrez Gene 6887 Human</a> <a href="#">Q16559</a>
Background:	TAL2 is a helix-loop-helix protein. Translocations between this gene on chromosome 9 and the T-cell receptor beta-chain locus on chromosome 7 have been associated with activation of the T-cell acute lymphocytic leukemia 2 gene and T-cell acute lymphoblastic leukemia.
Synonyms:	bHLHa19; T-cell acute lymphocytic leukemia 2
Note:	Immunogen sequence homology: Human: 100%; Bovine: 78%
Protein Families:	Druggable Genome



[View online »](#)

## Product images:



WB Suggested Anti-TAL2 Antibody Titration: 0.2-1 ug/ml; ELISA Titer: 1:312500; Positive Control: Human Spleen