

Product datasheet for **TA330032**

c Maf (MAF) Rabbit Polyclonal Antibody

Product data:

| | |
|--------------------------------|---|
| Product Type: | Primary Antibodies |
| Applications: | WB |
| Recommended Dilution: | WB |
| Reactivity: | Human |
| Host: | Rabbit |
| Isotype: | IgG |
| Clonality: | Polyclonal |
| Immunogen: | The immunogen for anti-MAF antibody: synthetic peptide directed towards the middle region of human MAF. Synthetic peptide located within the following region: LQQVDHLKQEISRLVRERDAYKEKYEKLVSSENGSSSDNPSSPEFFI |
| Formulation: | Liquid. Purified antibody supplied in 1x PBS buffer with 0.09% (w/v) sodium azide and 2% sucrose. <i>Note that this product is shipped as lyophilized powder to China customers.</i> |
| Conjugation: | Unconjugated |
| Storage: | Store at -20°C as received. |
| Stability: | Stable for 12 months from date of receipt. |
| Predicted Protein Size: | 42 kDa |
| Gene Name: | MAF bZIP transcription factor |
| Database Link: | NP_005351 Entrez Gene 4094 Human O75444 |
| Background: | MAF acts as a transcriptional activator or repressor. It is involved in embryonic lens fiber cell development. It recruits the transcriptional coactivators CREBBP and/or EP300 to crystallin promoters leading to up-regulation of crystallin gene during lens fiber cell differentiation. MAF is also involved in the initial chondrocyte terminal differentiation and the disappearance of hypertrophic chondrocytes during endochondral bone development. When overexpressed, MAF represses anti-oxidant response element (ARE)-mediated transcription. It may be involved either as an oncogene or as a tumor suppressor, depending on the cell context. |



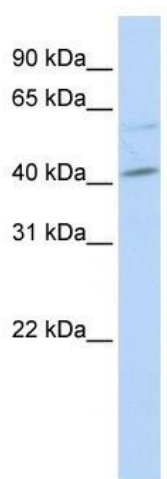
[View online »](#)

Synonyms: c-MAF; CCA4; CTRCT21

Note: Immunogen sequence homology: Bovine: 100%; Chicken: 100%; Dog: 100%; Guinea pig: 100%; Horse: 100%; Human: 100%; Mouse: 100%; Rat: 100%; Zebrafish: 100%; African clawed frog: 78%; Pig: 78%

Protein Families: Druggable Genome, Transcription Factors

Product images:



WB Suggested Anti-MAF Antibody Titration: 0.2-1 ug/ml; ELISA Titer: 1:62500; Positive Control: HeLa cell lysate