

Product datasheet for **TA330031**

IRF2 Rabbit Polyclonal Antibody

Product data:

Product Type:	Primary Antibodies
Applications:	WB
Recommended Dilution:	WB
Reactivity:	Human
Host:	Rabbit
Isotype:	IgG
Clonality:	Polyclonal
Immunogen:	The immunogen for anti-IRF2 antibody: synthetic peptide directed towards the N terminal of human IRF2. Synthetic peptide located within the following region: APLFRNRAIHTGKHQPGVDKDPKTKWKFRCAMNSLPDIEEVKDKSIKK
Formulation:	Liquid. Purified antibody supplied in 1x PBS buffer with 0.09% (w/v) sodium azide and 2% sucrose. <i>Note that this product is shipped as lyophilized powder to China customers.</i>
Conjugation:	Unconjugated
Storage:	Store at -20°C as received.
Stability:	Stable for 12 months from date of receipt.
Predicted Protein Size:	39 kDa
Gene Name:	interferon regulatory factor 2
Database Link:	NP_002190 Entrez Gene 3660 Human P14316
Background:	IRF2 encodes interferon regulatory factor 2, a member of the interferon regulatory transcription factor (IRF) family. IRF2 competitively inhibits the IRF1-mediated transcriptional activation of interferons alpha and beta, and presumably other genes that employ IRF1 for transcription activation. However, IRF2 also functions as a transcriptional activator of histone H4.
Synonyms:	IRF-2

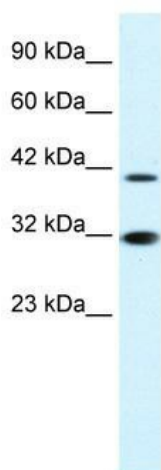


[View online »](#)

Note: Immunogen sequence homology: Dog: 100%; Guinea pig: 100%; Horse: 100%; Human: 100%; Pig: 100%; Rat: 100%; Bovine: 92%; Mouse: 92%; Sheep: 92%; Zebrafish: 90%; African clawed frog: 85%; Chicken: 85%

Protein Families: Druggable Genome, Transcription Factors

Product images:



WB Suggested Anti-IRF2 Antibody Titration: 0.2-1 ug/ml; Positive Control: Jurkat cell lysate