

## Product datasheet for **TA330029**

### **HOX11 (TLX1) Rabbit Polyclonal Antibody**

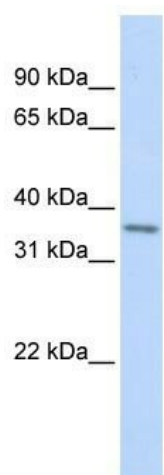
#### **Product data:**

<b>Product Type:</b>	Primary Antibodies
<b>Applications:</b>	WB
<b>Recommended Dilution:</b>	WB
<b>Reactivity:</b>	Human
<b>Host:</b>	Rabbit
<b>Isotype:</b>	IgG
<b>Clonality:</b>	Polyclonal
<b>Immunogen:</b>	The immunogen for anti-TLX1 antibody: synthetic peptide directed towards the middle region of human TLX1. Synthetic peptide located within the following region: VAHPQPLATGLPTVPSVPAMPGVNLTGLTFPWMESENRRYTKDRFTGHPY
<b>Formulation:</b>	Liquid. Purified antibody supplied in 1x PBS buffer with 0.09% (w/v) sodium azide and 2% sucrose. <i>Note that this product is shipped as lyophilized powder to China customers.</i>
<b>Conjugation:</b>	Unconjugated
<b>Storage:</b>	Store at -20°C as received.
<b>Stability:</b>	Stable for 12 months from date of receipt.
<b>Predicted Protein Size:</b>	34 kDa
<b>Gene Name:</b>	T-cell leukemia homeobox 1
<b>Database Link:</b>	<a href="#">NP_005512</a> <a href="#">Entrez Gene 3195 Human P31314</a>
<b>Background:</b>	TLX1 contains 1 homeobox DNA-binding domain. TLX1 controls the genesis of the spleen. A chromosomal aberration involving TLX1, translocation t(10;14)(q24;q11) with TCRD, may be a cause of a form of T-cell acute lymphoblastic leukemia (T-ALL).
<b>Synonyms:</b>	HOX11; TCL3
<b>Note:</b>	Immunogen sequence homology: African clawed frog: 100%; Bovine: 100%; Chicken: 100%; Dog: 100%; Guinea pig: 100%; Human: 100%; Mouse: 100%; Pig: 100%; Rabbit: 100%; Rat: 100%; Zebrafish: 100%



[View online »](#)

## Product images:



WB Suggested Anti-TLX1 Antibody Titration: 0.2-1 ug/ml; ELISA Titer: 1:312500; Positive Control: Human heart