

## Product datasheet for **TA330028**

### ETS1 Rabbit Polyclonal Antibody

#### Product data:

Product Type:	Primary Antibodies
Applications:	IHC, WB
Recommended Dilution:	WB, IHC
Reactivity:	Human
Host:	Rabbit
Isotype:	IgG
Clonality:	Polyclonal
Immunogen:	The immunogen for anti-ETS1 antibody: synthetic peptide directed towards the N terminal of human ETS1. Synthetic peptide located within the following region: TFSGFTKEQQRLGIPKDPQRQWTETHVRDWMWAVNEFSLKGVDFQKFCMN
Formulation:	Liquid. Purified antibody supplied in 1x PBS buffer with 0.09% (w/v) sodium azide and 2% sucrose. <i>Note that this product is shipped as lyophilized powder to China customers.</i>
Conjugation:	Unconjugated
Storage:	Store at -20°C as received.
Stability:	Stable for 12 months from date of receipt.
Predicted Protein Size:	50 kDa
Gene Name:	ETS proto-oncogene 1, transcription factor
Database Link:	<a href="#">NP_005229</a> <a href="#">Entrez Gene 2113 Human P14921</a>
Background:	ETS-1 is a member of the ets family of transcription factors, which are key mediators of physiological and pathological processes.
Synonyms:	ETS-1; EWSR2; p54
Note:	Immunogen sequence homology: Bovine: 100%; Dog: 100%; Goat: 100%; Guinea pig: 100%; Horse: 100%; Human: 100%; Mouse: 100%; Pig: 100%; Rabbit: 100%; Rat: 100%; Chicken: 92%; Zebrafish: 84%; African clawed frog: 76%
Protein Families:	Druggable Genome, Transcription Factors



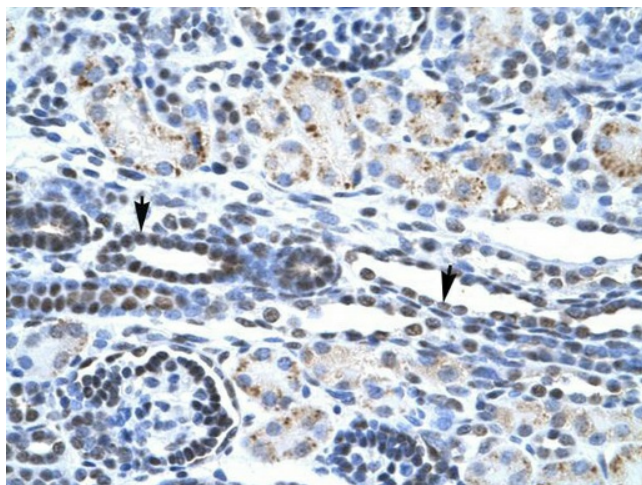
[View online »](#)

Protein Pathways: Dorso-ventral axis formation, Pathways in cancer, Renal cell carcinoma

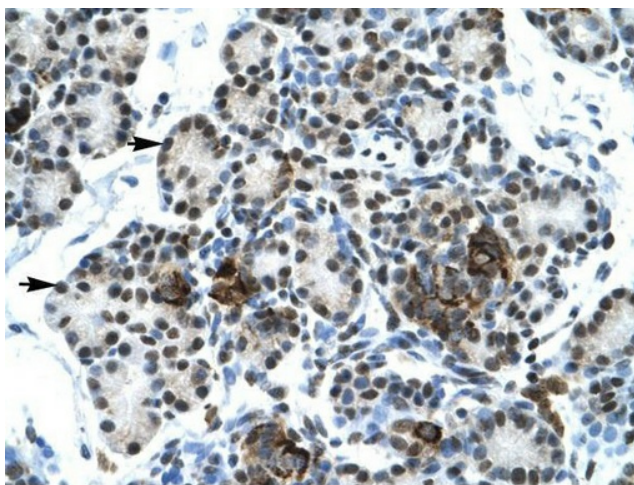
### Product images:



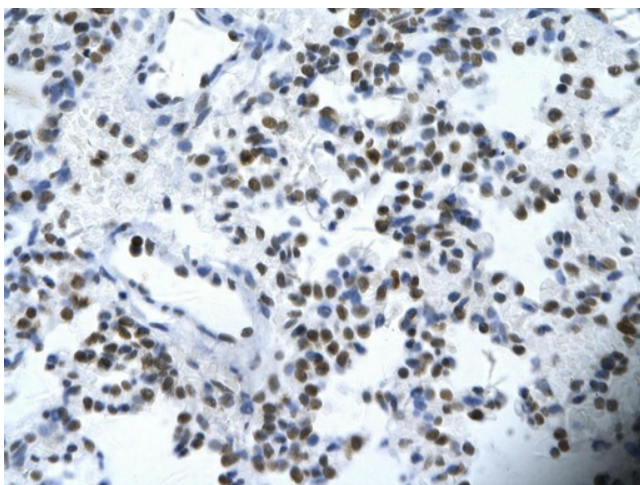
WB Suggested Anti-ETS1 Antibody Titration:  
1.0ug/ml; Positive Control: HepG2 cell lysate



Human kidney



Human Pancrease



Rabbit Anti-ETS1 Antibody; Paraffin Embedded  
Tissue: Human alveolar cell; Cellular Data:  
Epithelial cells of renal tubule; Antibody  
Concentration: 4.0-8.0 ug/ml; Magnification: 400X