

Product datasheet for **TA330027**

DEK Rabbit Polyclonal Antibody

Product data:

Product Type:	Primary Antibodies
Applications:	WB
Recommended Dilution:	WB
Reactivity:	Human
Host:	Rabbit
Isotype:	IgG
Clonality:	Polyclonal
Immunogen:	The immunogen for anti-DEK antibody: synthetic peptide directed towards the middle region of human DEK. Synthetic peptide located within the following region: ELKETIKLLASANLEEV TMKQICKK VYENYPTYDLTERKDFIKTTVKEL
Formulation:	Liquid. Purified antibody supplied in 1x PBS buffer with 0.09% (w/v) sodium azide and 2% sucrose. <i>Note that this product is shipped as lyophilized powder to China customers.</i>
Conjugation:	Unconjugated
Storage:	Store at -20°C as received.
Stability:	Stable for 12 months from date of receipt.
Predicted Protein Size:	43 kDa
Gene Name:	DEK proto-oncogene
Database Link:	NP_003463 Entrez Gene 7913 Human P35659



[View online »](#)

Background:

DEK is a protein with one SAP domain. This protein binds to cruciform and superhelical DNA and induces positive supercoils into closed circular DNA, and is also involved in splice site selection during mRNA processing. Chromosomal aberrations involving this region, increased expression of this gene, and the presence of antibodies against this protein are all associated with various diseases. Two transcript variants encoding different isoforms have been found for this gene. This gene encodes a protein with one SAP domain. This protein binds to cruciform and superhelical DNA and induces positive supercoils into closed circular DNA and is also involved in splice site selection during mRNA processing. Chromosomal aberrations involving this region, increased expression of this gene and the presence of antibodies against this protein are all associated with various diseases. Publication Note: This RefSeq record includes a subset of the publications that are available for this gene. Please see the Entrez Gene record to access additional publications.

Synonyms:

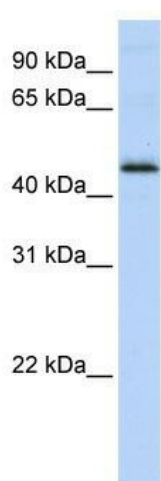
D6S231E

Note:

Immunogen sequence homology: Human: 100%; Bovine: 85%; Guinea pig: 85%; Horse: 85%; Mouse: 85%; Rabbit: 85%; Rat: 85%; Chicken: 84%; Pig: 78%

Protein Families:

Druggable Genome, Transcription Factors

Product images:

WB Suggested Anti-DEK Antibody Titration: 0.2-1 ug/ml; ELISA Titer: 1:1562500; Positive Control: MCF7 cell lysate