

Product datasheet for **TA330026**

beta Catenin (CTNNB1) Rabbit Polyclonal Antibody

Product data:

Product Type:	Primary Antibodies
Applications:	WB
Recommended Dilution:	WB, CHIP
Reactivity:	Human
Host:	Rabbit
Isotype:	IgG
Clonality:	Polyclonal
Immunogen:	The immunogen for Anti-CTNNB1 antibody is: synthetic peptide directed towards the C-terminal region of Human CTNNB1. Synthetic peptide located within the following region: LGLDIGAQGEPLGYRQDDPSYRSFHSGGYGQDALGMDPMMHEHEMGGHHPG
Formulation:	Liquid. Purified antibody supplied in 1x PBS buffer with 0.09% (w/v) sodium azide and 2% sucrose. <i>Note that this product is shipped as lyophilized powder to China customers.</i>
Conjugation:	Unconjugated
Storage:	Store at -20°C as received.
Stability:	Stable for 12 months from date of receipt.
Predicted Protein Size:	85 kDa
Gene Name:	catenin beta 1
Database Link:	NP_001895 Entrez Gene 1499 Human P35222



[View online »](#)

Background:

The protein encoded by this gene is part of a complex of proteins that constitute adherens junctions (AJs). AJs are necessary for the creation and maintenance of epithelial cell layers by regulating cell growth and adhesion between cells. The encoded protein also anchors the actin cytoskeleton and may be responsible for transmitting the contact inhibition signal that causes cells to stop dividing once the epithelial sheet is complete. Finally, this protein binds to the product of the APC gene, which is mutated in adenomatous polyposis of the colon. Mutations in this gene are a cause of colorectal cancer (CRC), pilomatrixoma (PTR), medulloblastoma (MDB), and ovarian cancer. Three transcript variants encoding the same protein have been found for this gene.

Synonyms:

armadillo; CTNNB; MRD19

Note:

Immunogen sequence homology: Dog: 100%; Guinea pig: 100%; Horse: 100%; Human: 100%; Mouse: 100%; Pig: 100%; Rabbit: 100%; Zebrafish: 100%; African clawed frog: 92%; Chicken: 92%

Protein Families:

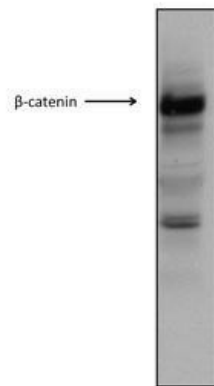
Druggable Genome, ES Cell Differentiation/IPS, Transcription Factors

Protein Pathways:

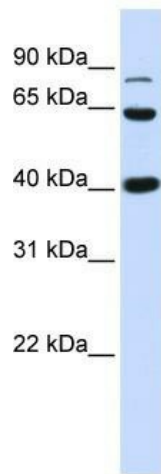
Adherens junction, Arrhythmogenic right ventricular cardiomyopathy (ARVC), Basal cell carcinoma, Colorectal cancer, Endometrial cancer, Focal adhesion, Leukocyte transendothelial migration, Melanogenesis, Pathogenic Escherichia coli infection, Pathways in cancer, Prostate cancer, Thyroid cancer, Tight junction, Wnt signaling pathway

Product images:

Detection of β -catenin Protein Levels in Whole Cell Lysate of HCT116 Human Colon Carcinoma By Western Blot

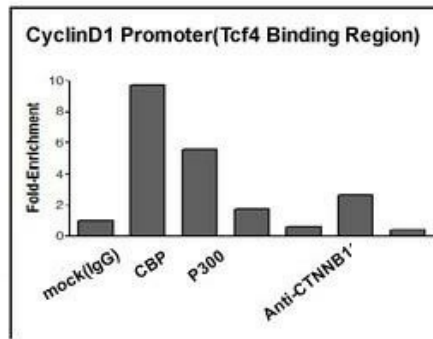
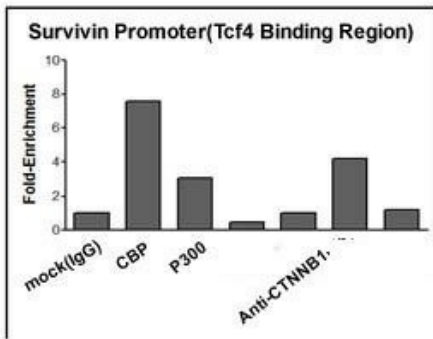


CTNNB1 antibody - middle region validated by WB using HCT116 cell lysate



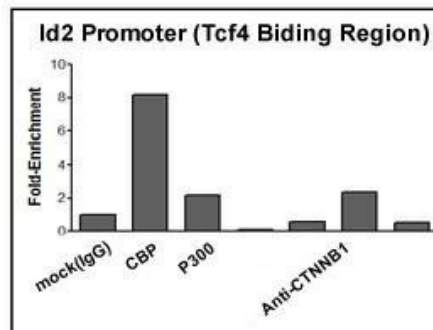
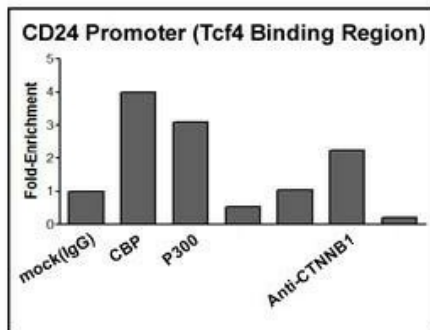
WB Suggested Anti-CTNNB1 Antibody Titration: 0.2-1 ug/ml ELISA Titer: 1:62500 Positive Control: Fetal Heart

ChIP Analysis of Four Wnt-regulated Promoters in HCT116 Human Colon Carcinoma



CTNNB1 antibody - middle region validated by CHIP using HCT116 cell lysate

ChIP Analysis of Four Wnt-regulated Promoters in HCT116 Human Colon Carcinoma



CTNNB1 antibody - middle region validated by CHIP using HCT116 cell lysate