

## Product datasheet for **TA330023**

### PRDM1 Rabbit Polyclonal Antibody

#### Product data:

Product Type:	Primary Antibodies
Applications:	IHC, WB
Recommended Dilution:	WB, IHC
Reactivity:	Human
Host:	Rabbit
Isotype:	IgG
Clonality:	Polyclonal
Immunogen:	The immunogen for anti-PRDM1 antibody: synthetic peptide directed towards the middle region of human PRDM1. Synthetic peptide located within the following region: VEDDISVISVVEKEILAVVRKEKEETGLKVSLQRNMGNGLLSSGCSLYES
Formulation:	Liquid. Purified antibody supplied in 1x PBS buffer with 0.09% (w/v) sodium azide and 2% sucrose. <i>Note that this product is shipped as lyophilized powder to China customers.</i>
Conjugation:	Unconjugated
Storage:	Store at -20°C as received.
Stability:	Stable for 12 months from date of receipt.
Predicted Protein Size:	77 kDa
Gene Name:	PR domain 1
Database Link:	<a href="#">NP_878911</a> <a href="#">Entrez Gene 639 Human</a> <a href="#">O75626</a>
Background:	PRDM1 is a protein that acts as a repressor of beta-interferon gene expression. The protein binds specifically to the PRDI (positive regulatory domain I element) of the beta-IFN gene promoter. Transcription of this gene increases upon virus induction. Two alternatively spliced transcript variants that encode different isoforms have been reported. This gene encodes a protein that acts as a repressor of beta-interferon gene expression. The protein binds specifically to the PRDI (positive regulatory domain I element) of the beta-IFN gene promoter. Transcription of this gene increases upon virus induction. Two alternatively spliced transcript variants that encode different isoforms have been reported.



[View online »](#)

**Synonyms:** BLIMP1; PRDI-BF1

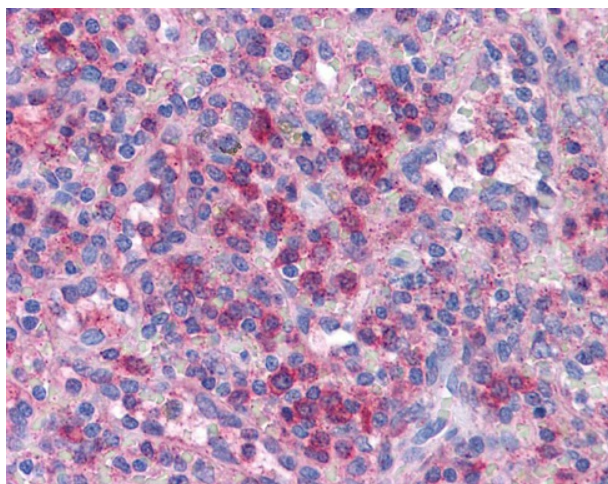
**Note:** Immunogen sequence homology: Bovine: 100%; Dog: 100%; Horse: 100%; Human: 100%; Pig: 100%; Mouse: 92%; Rabbit: 92%; Rat: 92%; Guinea pig: 84%

**Protein Families:** Transcription Factors

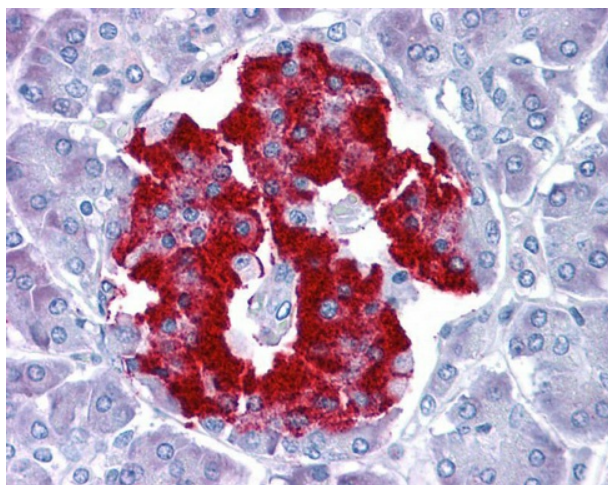
**Product images:**



WB Suggested Anti-PRDM1 Antibody Titration:  
0.2-1 ug/ml; ELISA Titer: 1:62500; Positive Control:  
SH-SY5Y cell lysate



Immunohistochemistry with Spleen cell lysate  
tissue at an antibody concentration of 5.0ug/ml  
using anti-PRDM1 antibody (P100596\_P050)



Anti-BLIMP-1 antibody IHC staining of human pancreas. Immunohistochemistry of formalin-fixed, paraffin-embedded tissue after heat-induced antigen retrieval. Antibody concentration 5 ug/ml.