

Product datasheet for **TA330022**

PEDF (SERPINF1) Rabbit Polyclonal Antibody

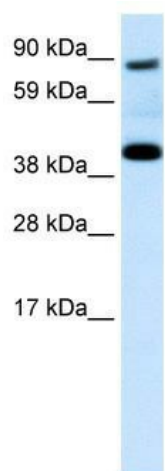
Product data:

Product Type:	Primary Antibodies
Applications:	IHC, WB
Recommended Dilution:	WB, IHC
Reactivity:	Human
Host:	Rabbit
Isotype:	IgG
Clonality:	Polyclonal
Immunogen:	The immunogen for anti-SERPINF1 antibody: synthetic peptide directed towards the N terminal of human SERPINF1. Synthetic peptide located within the following region: GALLGHSSCQNPASPPEEGSPDPDSTGALVEEEDPFFKVPVNKLA AVSN
Formulation:	Liquid. Purified antibody supplied in 1x PBS buffer with 0.09% (w/v) sodium azide and 2% sucrose. <i>Note that this product is shipped as lyophilized powder to China customers.</i>
Conjugation:	Unconjugated
Storage:	Store at -20°C as received.
Stability:	Stable for 12 months from date of receipt.
Predicted Protein Size:	46 kDa
Gene Name:	serpin family F member 1
Database Link:	NP_002606 Entrez Gene 5176 Human P36955
Background:	The SERPINF1 gene may play a significant role in determining the balance of angiogenesis/ antiangiogenesis during atherogenesis. A novel role of extracellular phosphorylation is shown to completely change the nature of this gene from a neutrophilic to an antiangiogenic factor.
Synonyms:	EPC-1; OI6; OI12; PEDF; PIG35
Note:	Immunogen sequence homology: Human: 100%; Mouse: 86%; Sheep: 86%; Guinea pig: 80%; Horse: 80%; Pig: 80%; Dog: 78%; Rat: 75%
Protein Families:	Druggable Genome, Secreted Protein

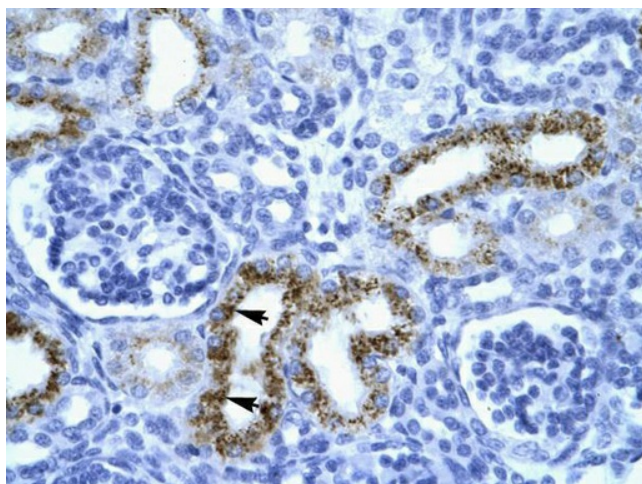


[View online »](#)

Product images:



WB Suggested Anti-SERPINF1 Antibody Titration:
0.2-1 ug/ml; Positive Control: Human Placenta



Human kidney