

## Product datasheet for **TA330021**

### MMP2 Rabbit Polyclonal Antibody

#### Product data:

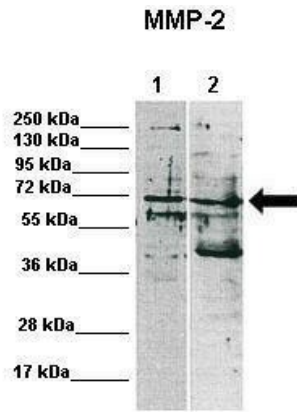
Product Type:	Primary Antibodies
Applications:	IHC, WB
Recommended Dilution:	WB, IHC
Reactivity:	Human
Host:	Rabbit
Isotype:	IgG
Clonality:	Polyclonal
Immunogen:	The immunogen for anti-MMP2 antibody: synthetic peptide directed towards the C terminal of human MMP2. Synthetic peptide located within the following region: AWNAI PDNLD AVVDLQGGGHSYFFK GAYYLKLENQSLKSVKFGSIKSDWL
Formulation:	Liquid. Purified antibody supplied in 1x PBS buffer with 0.09% (w/v) sodium azide and 2% sucrose. <i>Note that this product is shipped as lyophilized powder to China customers.</i>
Conjugation:	Unconjugated
Storage:	Store at -20°C as received.
Stability:	Stable for 12 months from date of receipt.
Predicted Protein Size:	74 kDa
Gene Name:	matrix metalloproteinase 2
Database Link:	<a href="#">NP_004521</a> <a href="#">Entrez Gene 4313 Human P08253</a>
Background:	MMP-2 is involved in the cleavage of gelatin type I and collagen types IV, V, VII, X.
Synonyms:	CLG4; CLG4A; MMP-2; MMP-II; MONA; TBE-1
Note:	Immunogen sequence homology: Bovine: 100%; Dog: 100%; Guinea pig: 100%; Horse: 100%; Human: 100%; Mouse: 100%; Pig: 100%; Rat: 100%; Sheep: 100%; Rabbit: 93%
Protein Families:	Druggable Genome, Protease



[View online »](#)

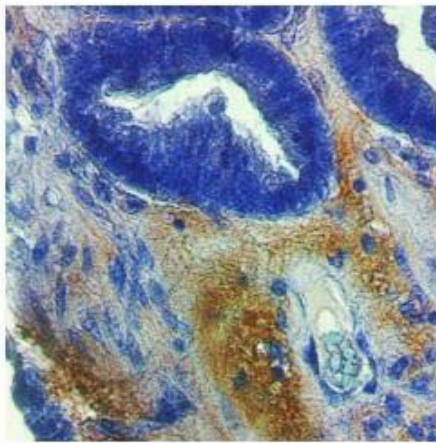
**Protein Pathways:** Bladder cancer, GnRH signaling pathway, Leukocyte transendothelial migration, Pathways in cancer

**Product images:**



Lanes: Lane 1: 15ug MDA-MB-231 lysate; Lane 2: 15ug MCF7 lysate; Primary Antibody Dilution: 1:1000; Secondary Antibody: Anti-rabbit-HRP; Secondary Antibody Dilution: 1:10,000; Gene Name: MMP2; Submitted by: Katarzyna Augoff, University of Wroclaw;

See Immunoblot 1 Data and Customer Feedback for more Information



MMP1 in connective tissue in ovarian carcinoma was detected using HRP/DAB brown color stain. Recommended for IHC on human tissue. Working dilution 2-10 ug/mL