

Product datasheet for **TA330018**

Cytokeratin 14 (KRT14) Rabbit Polyclonal Antibody

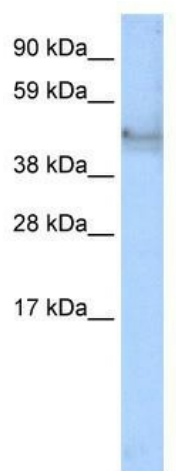
Product data:

Product Type:	Primary Antibodies
Applications:	WB
Recommended Dilution:	WB
Reactivity:	Human, Mouse
Host:	Rabbit
Isotype:	IgG
Clonality:	Polyclonal
Immunogen:	The immunogen for anti-KRT14 antibody: synthetic peptide directed towards the C terminal of human KRT14. Synthetic peptide located within the following region: DAHLSSSQFSSGSQSSRDVTSSSRQIRTKVMDVHDGKVVSTHEQVLRTKN
Formulation:	Liquid. Purified antibody supplied in 1x PBS buffer with 0.09% (w/v) sodium azide and 2% sucrose. <i>Note that this product is shipped as lyophilized powder to China customers.</i>
Conjugation:	Unconjugated
Storage:	Store at -20°C as received.
Stability:	Stable for 12 months from date of receipt.
Predicted Protein Size:	52 kDa
Gene Name:	keratin 14
Database Link:	NP_000517 Entrez Gene 16664 Mouse Entrez Gene 3861 Human P02533
Background:	KRT14 is a type I keratin, which is usually found as a heterotetramer with two keratin 5 molecules, a type II keratin. Together they form the cytoskeleton of epithelial cells.
Synonyms:	CK14; EBS3; EBS4; K14; NFJ
Note:	Immunogen sequence homology: Rat: 100%; Rabbit: 92%; Guinea pig: 85%; Mouse: 85%



[View online »](#)

Product images:



WB Suggested Anti-KRT14 Antibody Titration:
1.25ug/ml; ELISA Titer: 1:312500; Positive Control:
Human Thymus