

Product datasheet for **TA330015**

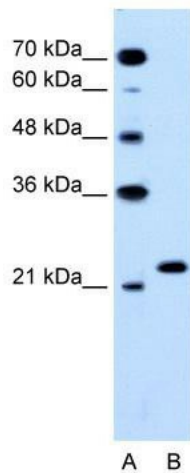
RAB14 Rabbit Polyclonal Antibody

Product data:

Product Type:	Primary Antibodies
Applications:	IHC, WB
Recommended Dilution:	WB, IHC
Reactivity:	Human, Murine
Host:	Rabbit
Isotype:	IgG
Clonality:	Polyclonal
Immunogen:	The immunogen for anti-RAB14 antibody: synthetic peptide directed towards the C terminal of human RAB14. Synthetic peptide located within the following region: FLEAAKKIYQNIQDGLDLNAAESGVQHKPSAPQGGRLTSEPQPQREGCG
Formulation:	Liquid. Purified antibody supplied in 1x PBS buffer with 0.09% (w/v) sodium azide and 2% sucrose. <i>Note that this product is shipped as lyophilized powder to China customers.</i>
Conjugation:	Unconjugated
Storage:	Store at -20°C as received.
Stability:	Stable for 12 months from date of receipt.
Predicted Protein Size:	24 kDa
Gene Name:	RAB14, member RAS oncogene family
Database Link:	NP_057406 Entrez Gene 51552 Human P61106
Background:	Localized to biosynthetic and endosomal compartments, Rab14 is involved in the biosynthetic/recycling pathway between the Golgi and endosomal compartments.
Synonyms:	FBP; RAB-14
Note:	Immunogen sequence homology: African clawed frog: 100%; Bovine: 100%; Chicken: 100%; Dog: 100%; Goat: 100%; Human: 100%; Mouse: 100%; Pig: 100%; Rat: 100%; Zebrafish: 93%
Protein Families:	Druggable Genome



[View online »](#)

Product images:


WB Suggested Anti-RAB14 Antibody Titration: 0.2-1 ug/ml; ELISA Titer: 1:62500; Positive Control: HepG2 cell lysate. There is BioGPS gene expression data showing that RAB14 is expressed in HepG2.


Anti-RAB14 Western Blot & Peptide Block Validation

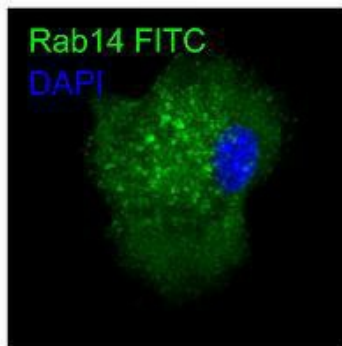
Lysate: HepG2 Cell

Lane A: Primary Antibody
Lane B: Primary Antibody + Blocking Peptide

Primary Antibody Concentration: 2.0µg/ml
Peptide Concentration: 2.0µg/ml
Lysate Quantity: 25µg/lane
Gel Concentration: 12%

Host: Rabbit; Target Name: RAB14; Sample Tissue: HepG2; Lane A: Primary Antibody; Lane B: Primary Antibody + Blocking Peptide ; Primary Antibody Concentration: 2.0ug/mL; Peptide Concentration: 2.0ug/mL; Lysate Quantity: 25ug/lane; Gel Concentration: 12%

RAB14



Blue: Nucleus
Green: Rab14

Lanes : Murin JAWS-II cell line Primary Antibody Dilution : 1:100 Secondary Antibody : Anti-rabbit-FITC Secondary Antibody Dilution : 1:1000 Gene Name : Blue: Nucleus Green: Rab14 Submitted by : RAB14