

## Product datasheet for **TA330013**

### Synapsin III (SYN3) Rabbit Polyclonal Antibody

#### Product data:

Product Type:	Primary Antibodies
Applications:	WB
Recommended Dilution:	WB
Reactivity:	Human
Host:	Rabbit
Isotype:	IgG
Clonality:	Polyclonal
Immunogen:	The immunogen for anti-SYN3 antibody: synthetic peptide directed towards the middle region of human SYN3. Synthetic peptide located within the following region: GATLASQPRPPVQGRSTSQQGEESKKPAPPHPHLNKSQLTNSLSTSDTS
Formulation:	Liquid. Purified antibody supplied in 1x PBS buffer with 0.09% (w/v) sodium azide and 2% sucrose. <i>Note that this product is shipped as lyophilized powder to China customers.</i>
Conjugation:	Unconjugated
Storage:	Store at -20°C as received.
Stability:	Stable for 12 months from date of receipt.
Predicted Protein Size:	63 kDa
Gene Name:	synapsin III
Database Link:	<a href="#">NP_003481</a> <a href="#">Entrez Gene 8224 Human</a> <a href="#">O14994</a>



[View online »](#)

**Background:**

This gene is a member of the synapsin gene family. Synapsins encode neuronal phosphoproteins which associate with the cytoplasmic surface of synaptic vesicles. Family members are characterized by common protein domains, and they are implicated in synaptogenesis and the modulation of neurotransmitter release, suggesting a potential role in several neuropsychiatric diseases. The protein encoded by this gene shares the synapsin family domain model, with domains A, C, and E exhibiting the highest degree of conservation. The protein contains a unique domain J, located between domains C and E. Based on this gene's localization to 22q12.3, a possible schizophrenia susceptibility locus, and the established neurobiological roles of the synapsins, this family member may represent a candidate gene for schizophrenia. The TIMP3 gene is located within an intron of this gene and is transcribed in the opposite direction. Alternative splicing of this gene results in multiple splice variants that encode different isoforms. [provided by RefSeq, Oct 2008]

**Synonyms:**

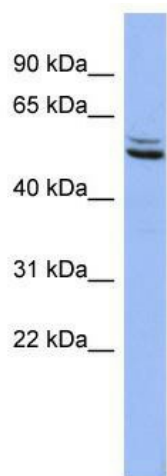
cN28H9.2 (synapsin III); OTTHUMP00000028987; synapsin III

**Note:**

Immunogen sequence homology: Human: 100%; Pig: 100%; Bovine: 85%; Mouse: 85%; Rabbit: 85%; Rat: 85%; Guinea pig: 78%

**Protein Families:**

Secreted Protein

**Product images:**

WB Suggested Anti-SYN3 Antibody Titration: 0.2-1 ug/ml; ELISA Titer: 1:12500; Positive Control: HepG2 cell lysate