

Product datasheet for **TA330012**

Syntaxin 1a (STX1A) Rabbit Polyclonal Antibody

Product data:

Product Type:	Primary Antibodies
Applications:	WB
Recommended Dilution:	WB
Reactivity:	Human
Host:	Rabbit
Isotype:	IgG
Clonality:	Polyclonal
Immunogen:	The immunogen for anti-STX1A antibody: synthetic peptide directed towards the N terminal of human STX1A. Synthetic peptide located within the following region: KDRTQLRTAKDSDDDDVAVTVDRDRFMDEFFEQVEEIRGFIDKIAENV
Formulation:	Liquid. Purified antibody supplied in 1x PBS buffer with 0.09% (w/v) sodium azide and 2% sucrose. <i>Note that this product is shipped as lyophilized powder to China customers.</i>
Conjugation:	Unconjugated
Storage:	Store at -20°C as received.
Stability:	Stable for 12 months from date of receipt.
Predicted Protein Size:	33 kDa
Gene Name:	syntaxin 1A
Database Link:	NP_004594 Entrez Gene 6804 Human Q16623



[View online »](#)

Background:

Synaptic vesicles store neurotransmitters that are released during calcium-regulated exocytosis. The specificity of neurotransmitter release requires the localization of both synaptic vesicles and calcium channels to the presynaptic active zone. Syntaxins function in this vesicle fusion process. Syntaxins also serve as a substrate for botulinum neurotoxin type C, a metalloprotease that blocks exocytosis and has high affinity for a molecular complex that includes the alpha-latrotoxin receptor which produces explosive exocytosis. Synaptic vesicles store neurotransmitters that are released during calcium-regulated exocytosis. The specificity of neurotransmitter release requires the localization of both synaptic vesicles and calcium channels to the presynaptic active zone. Syntaxins function in this vesicle fusion process. Syntaxins also serve as a substrate for botulinum neurotoxin type C, a metalloprotease that blocks exocytosis and has high affinity for a molecular complex that includes the alpha-latrotoxin receptor (MIM 600565) which produces explosive exocytosis (Zhang et al., 1995 [PubMed 7622072]). [supplied by OMIM]. Publication Note: This RefSeq record includes a subset of the publications that are available for this gene. Please see the Entrez Gene record to access additional publications. PRIMARYREFSEQ_SPAN PRIMARY_IDENTIFIER PRIMARY_SPAN COMP 1-1253 BC064644.1 1-1253 1254-2117 BC000444.2 1209-2072

Synonyms:

HPC-1; P35-1; STX1; SYN1A

Note:

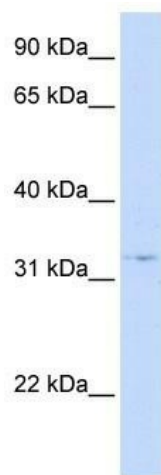
Immunogen sequence homology: Bovine: 100%; Dog: 100%; Guinea pig: 100%; Human: 100%; Mouse: 100%; Pig: 100%; Rat: 100%

Protein Families:

Druggable Genome, Secreted Protein, Transmembrane

Protein Pathways:

SNARE interactions in vesicular transport

Product images:

WB Suggested Anti-STX1A Antibody Titration: 0.2-1 ug/ml; ELISA Titer: 1:62500; Positive Control: 721_B cell lysate