

Product datasheet for **TA330009**

CHRNA1 Rabbit Polyclonal Antibody

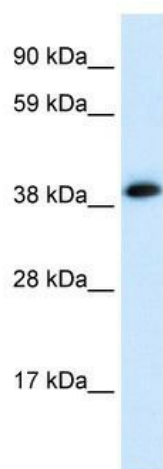
Product data:

Product Type:	Primary Antibodies
Applications:	IHC, WB
Recommended Dilution:	WB, IHC
Reactivity:	Human
Host:	Rabbit
Isotype:	IgG
Clonality:	Polyclonal
Immunogen:	The immunogen for anti-CHRNA1 antibody: synthetic peptide directed towards the C terminal of human CHRNA1. Synthetic peptide located within the following region: STHVMPNWRKVFIDTIPNIMFFSTMKRPSREKQDKKIFTEDIDISDISG
Formulation:	Liquid. Purified antibody supplied in 1x PBS buffer with 0.09% (w/v) sodium azide and 2% sucrose. <i>Note that this product is shipped as lyophilized powder to China customers.</i>
Conjugation:	Unconjugated
Storage:	Store at -20°C as received.
Stability:	Stable for 12 months from date of receipt.
Predicted Protein Size:	52 kDa
Gene Name:	cholinergic receptor nicotinic alpha 1 subunit
Database Link:	NP_000070 Entrez Gene 1134 Human P02708
Background:	CHRNA1 encodes an alpha subunit that plays a role in acetylcholine binding/channel gating. The muscle acetylcholine receptor consists of 5 subunits of 4 different types: 2 alpha isoforms and 1 each of beta, gamma, and delta subunits.
Synonyms:	ACHRA; ACHRD; CHRNA; CMS1A; CMS1B; CMS2A; FCCMS; SCCMS
Note:	Immunogen sequence homology: Dog: 100%; Human: 100%; Pig: 100%; Rabbit: 93%; Chicken: 86%; Guinea pig: 86%; Mouse: 80%
Protein Families:	Druggable Genome, Ion Channels: Cys-loop Receptors, Transmembrane

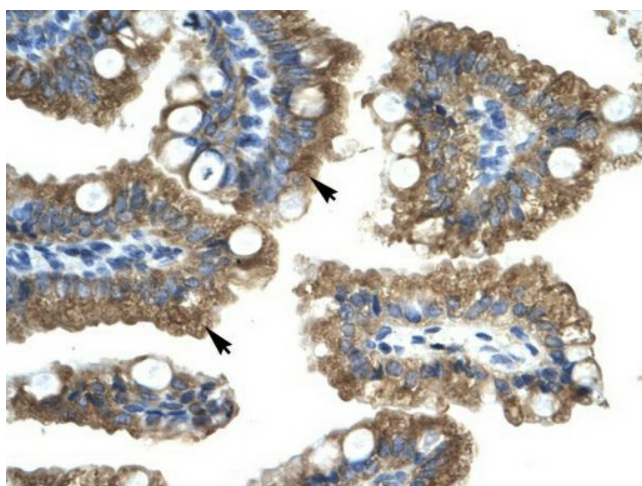


[View online »](#)

Product images:



WB Suggested Anti-CHRNA1 Antibody Titration:
0.12ug/ml; Positive Control: Human heart



Human Intestine