

Product datasheet for **TA330008**

SNAP-beta (NAPB) Rabbit Polyclonal Antibody

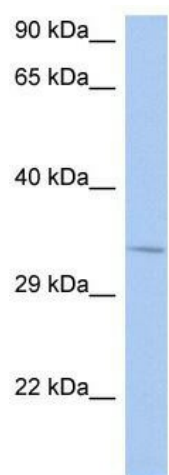
Product data:

Product Type:	Primary Antibodies
Applications:	WB
Recommended Dilution:	WB
Reactivity:	Human
Host:	Rabbit
Isotype:	IgG
Clonality:	Polyclonal
Immunogen:	The immunogen for anti-NAPB antibody: synthetic peptide directed towards the N terminal of human NAPB. Synthetic peptide located within the following region: MDNAGKEREAVQLMAEAEKRVKASHSFLRGLFGGNTRIEEACEMYTRAAN
Formulation:	Liquid. Purified antibody supplied in 1x PBS buffer with 0.09% (w/v) sodium azide and 2% sucrose. <i>Note that this product is shipped as lyophilized powder to China customers.</i>
Conjugation:	Unconjugated
Storage:	Store at -20°C as received.
Stability:	Stable for 12 months from date of receipt.
Predicted Protein Size:	33 kDa
Gene Name:	NSF attachment protein beta
Database Link:	NP_071363 Entrez Gene 63908 Human Q9H115
Background:	NAPB is required for vesicular transport between the endoplasmic reticulum and the Golgi apparatus.
Synonyms:	SNAP-BETA; SNAPB
Note:	Immunogen sequence homology: Chicken: 100%; Dog: 100%; Guinea pig: 100%; Human: 100%; Mouse: 100%; Rabbit: 100%; Rat: 100%



[View online »](#)

Product images:



WB Suggested Anti-NAPB Antibody Titration: 0.2-1 ug/ml; ELISA Titer: 1:62500; Positive Control: SH-SY5Y cell lysate