

Product datasheet for **TA330007**

RAB8A Rabbit Polyclonal Antibody

Product data:

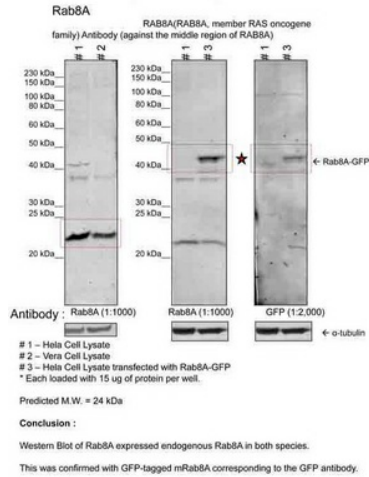
Product Type:	Primary Antibodies
Applications:	WB
Recommended Dilution:	WB
Reactivity:	Human, Monkey
Host:	Rabbit
Isotype:	IgG
Clonality:	Polyclonal
Immunogen:	The immunogen for anti-RAB8A antibody: synthetic peptide directed towards the middle region of human RAB8A. Synthetic peptide located within the following region: GIKFMETSAKANINVENAFFTLARDIKAKMDKKLEGNSPQGSNQGVKITP
Formulation:	Liquid. Purified antibody supplied in 1x PBS buffer with 0.09% (w/v) sodium azide and 2% sucrose. <i>Note that this product is shipped as lyophilized powder to China customers.</i>
Conjugation:	Unconjugated
Storage:	Store at -20°C as received.
Stability:	Stable for 12 months from date of receipt.
Predicted Protein Size:	24 kDa
Gene Name:	RAB8A, member RAS oncogene family
Database Link:	NP_005361 Entrez Gene 100423251 Monkey Entrez Gene 4218 Human P61006



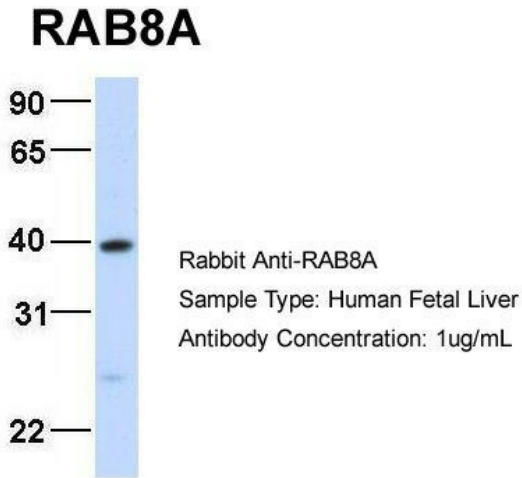
[View online »](#)

Background:	<p>RAB8A is a member of the RAS superfamily which are small GTP/GDP-binding proteins with an average size of 200 amino acids. The RAS-related proteins of the RAB/YPT family may play a role in the transport of proteins from the endoplasmic reticulum to the Golgi and the plasma membrane. The putative effector-binding site of this protein is similar to that of the RAB/YPT proteins. However, this protein contains a C-terminal CAAX motif that is characteristic of many RAS superfamily members but which is not found in YPT1 and the majority of RAB proteins. Although this gene was isolated as a transforming gene from a melanoma cell line, no linkage between MEL and malignant melanoma has been demonstrable. The protein encoded by this gene is a member of the RAS superfamily which are small GTP/GDP-binding proteins with an average size of 200 amino acids. The RAS-related proteins of the RAB/YPT family may play a role in the transport of proteins from the endoplasmic reticulum to the Golgi and the plasma membrane. This protein shares 97%, 96%, and 51% similarity with the dog RAB8, mouse MEL, and mouse YPT1 proteins, respectively and contains the 4 GTP/GDP-binding sites that are present in all the RAS proteins. The putative effector-binding site of this protein is similar to that of the RAB/YPT proteins. However, this protein contains a C-terminal CAAX motif that is characteristic of many RAS superfamily members but which is not found in YPT1 and the majority of RAB proteins. Although this gene was isolated as a transforming gene from a melanoma cell line, no linkage between MEL and malignant melanoma has been demonstrable. This oncogene is located 800 kb distal to MY09B on chromosome 19p13.1. Publication Note: This RefSeq record includes a subset of the publications that are available for this gene. Please see the Entrez Gene record to access additional publications.</p>
Synonyms:	MEL; RAB8
Note:	Immunogen sequence homology: Bovine: 100%; Chicken: 100%; Dog: 100%; Human: 100%; Pig: 100%; Sheep: 100%; Mouse: 85%; Rat: 85%; Zebrafish: 85%
Protein Families:	Druggable Genome, Transcription Factors

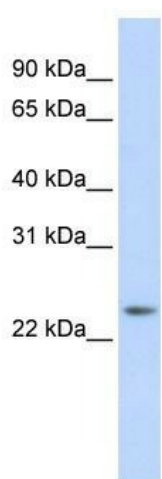
Product images:



RAB8A antibody - middle region validated by WB using 1. Human Cervical Cancer Cell Lysate (15ug); 2. Monkey Fibroblast Cell Lysate (15ug); 3. Human Cervical Cancer Cell transfected with mouse Rab8A-GFP (15ug) at 1:1000.



Host: Rabbit; Target Name: RAB8A; Sample Tissue: Human Fetal Liver; Antibody Dilution: 1.0ug/ml



WB Suggested Anti-RAB8A Antibody Titration: 0.2-1 ug/ml; ELISA Titer: 1:62500; Positive Control: 721_B cell lysate RAB8A is supported by BioGPS gene expression data to be expressed in 721_B